



## **COMPANY PROFILE**

**Plot Number 25/5/55,  
P.O. Box 40394,  
Kanengo, Lilongwe 4,  
☎ +265888851905/+265999855955  
🌐 [www.matexmw.com](http://www.matexmw.com)  
✉ [info@matexmw.com](mailto:info@matexmw.com)**

## TABLE OF CONTENTS

1.0. CONSULTANT’S ORGANISATION AND MANAGEMENT STRUCTURE .....	3
1.1. Consultant’s Organization .....	3
1.1.1. <i>Background</i> .....	3
1.2. Field of Specialization.....	4
1.2.1. <i>Environmental and Social Impact Assessment</i> .....	4
1.2.2. <i>Natural Resources Management</i> .....	4
1.2.3. <i>Energy and Climate Change</i> .....	5
1.2.4. <i>Technology and Innovation</i> .....	5
1.3. Consultant’s Management Structure .....	5
2.0. CONSULTANT’S EXPERIENCE.....	7
3.0. SOME OF MATEX INTERNATIONAL’S PROJECTS CONDUCTED IN DETAIL .....	16
4.0. BRIEF PROFILES OF STAFF.....	47

## 1.0. CONSULTANT'S ORGANISATION AND MANAGEMENT STRUCTURE

---

### 1.1. Consultant's Organization

#### 1.1.1. Background

Matex International is a private consulting firm, registered under the Business Names Registration Act (Cap. 46.02), and recognized as environmental impact assessment professionals by Malawi Environmental Protection Authority (MEPA). We have an established office on Plot 25/5/55 in Lilongwe city and is a private company limited by shares incorporated under Companies Act on 29th April 2021. The firm is in good standing with Malawi Revenue Authority (MRA) and is registered with Public Procurement and Disposal of Assists Authority (PPDA). **Section 7** provides certification of incorporation, tax clearance certificate and certificate of registration with PPDA. The firm has extensive experience working with and for international organizations.

The firm has experts with relevant experience in **Environmental Management, Engineering, Project Development and Management, Energy, Water Resource Management, Business Development and Social Development**. Our Team Leader is a registered member of the International Association for Impact Assessment (IAIA), an international organization of environmental and social impact assessment professionals. He is also registered with the Texas Association for Environmental Professionals. The team, provides skills and experience with deep local setting knowledge, and believes that the key to success is to work in close collaboration with clients and surrounding communities to produce tailored, practical, and long-term technical, social, and environmentally sustainable outcomes. Thus, we approach any project holistically, taking into account not only the capital costs of implementation, but also the practicality, ease of maintenance, operational expenses, and any ongoing residual impacts. In addition, the firm has an extensive network with other consulting firms as well as individual consultants working in specialized fields to offer wide range of services.

Some of our main clients include, among others, the Government of Malawi through various Ministries, Department and Agencies (MDAs), the World Bank, European Union, African Development Bank, Norfund and the private sector.

#### **Our Strength**

A key differentiator for Matex International is our local experience. We understand the complex political, social, economic and financial challenges that Malawi is facing, and we strive to develop solutions which are appropriate to the local context and culture with full participation of local communities.

# Matex International Company Profile

## **Our values**

Our core values are integrity, hard work, professionalism, inclusiveness and quality assurance. Our commitment to these core values and desire to stay connected to projects, activities, programmes and clients is what distinguishes us from other firms.

## **Services Provided**

- Environmental and Social Impact Assessments;
- Energy and Climate Resilience;
- Training and Capacity Building;
- Regulatory Permitting and Compliance;
- Monitoring and Performance Assessment;
- Public Consultations and Stakeholder Engagement;
- Resettlement Action Plans;
- Feasibility Studies and Project Design;
- Baseline Surveys; and
- Project Monitoring and Evaluation.

## **1.2. Field of Specialization**

Matex International has a client-centric business model that gives it the ability to deliver a wide range of its services throughout the nation. We have created the best team for our clients, developed strong client relationship and provide leading solutions on the market. The firm provides multidisciplinary services in the following sectors:

### ***1.2.1. Environmental and Social Impact Assessment***

Financiers, governments and investors require reliable assessments of potential project and programme impacts and corresponding feasible and cost-effective mitigation measures for decisions to be made to proceed with projects, programmes and investments. Matex International Ltd through its multidisciplinary team delivers Environmental and Social Impact Assessments, Environmental Audits and related services to help development projects and programmes proceed in an environmentally and socially acceptable manner.

Our safeguards scientists apply cutting-edge analytical skills to conduct biophysical and socioeconomic assessments, stakeholder and public consultations and risk assessments for Environmental Social Impact Assessment and Environmental Audits. Using innovative tools and our extensive experience, we work with our clients to produce results that meet regulatory and financiers' requirements to safeguard lives and the environment.

### ***1.2.2. Natural Resources Management***

The Matex International team of interdisciplinary experts comprising of water resource engineers, scientists, and planners are proven leaders in water resources through the development



# Matex International Company Profile

of successful solutions for watershed management, catchment management, flood reduction, water supply, irrigation development and related natural resource issues.

We solve some of the most challenging and complex water and environmental issues using an interdisciplinary approach that engages our team's expertise in civil and hydraulic engineering, hydrology, climate resilience, habitat and forest restoration and biodiversity assessments, waste management and groundwater recharge. We routinely take projects from planning and design, construction and operation and maintenance.

## ***1.2.3. Energy and Climate Change***

At Matex International, we strive to work with our clients to integrate analytics and technology to solving energy and climate change induced challenges. Our services help investors and public sector clients to solve most complex energy and climate change problems using technology and engineering solutions from planning and design through implementation.

## ***1.2.4. Technology and Innovation***

Environmental and social data management, systems development, geospatial analysis, and visualization are core services at Matex International. Our scientists and engineers strive to collect and process data to improve quality of assessments conducted for our clients.

We assist our clients in developing environmental and social management systems that are informed by quality data collected and processed using innovative tools. We utilize up to date technology and innovations to solve environmental and social problems encountered by projects and investments. Furthermore, we excel at visual representation of site data to facilitate communication of complex concepts and the overall story of a project and programme.

Matex international recognizes the comprehensive nature of projects in the rural development set-up and therefore offers its services through a multi-disciplinary team of environmental experts, community development specialists, engineers, social scientists and economist and analysts with considerable experience in research and development, acquired both locally and abroad.

## **1.3. Consultant's Management Structure**

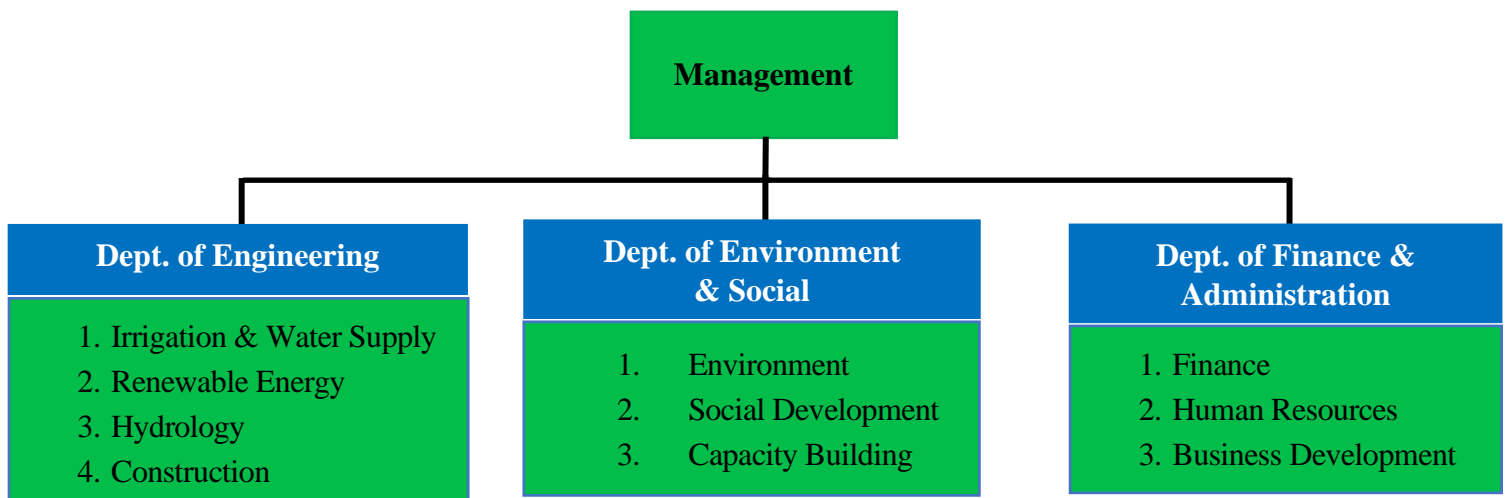
Matex International, has a client-centred model as such, we attempt to structure projects around the hands-on involvement of our core experts with local knowledge of the project areas. Experts from the firm, have experience of Malawi and makes them understand the very complex political, social, cultural, economic and financial challenges that Malawi is facing, and we strive to develop solutions which are appropriate and applicable to the local socioeconomic and cultural dynamics with full participation of local communities.



# Matex International Company Profile

The firm, has **six** full time consultants with relevant expertise in Environmental Management, Physical Planning, Social Sciences, Engineering, Business social Development and Water Resources Management. The firm engages the services of well skilled and experienced Research Assistants, from time to time, to assist in data collection, and analysis depending on the nature, size and location of the project. The firm also has fulltime Administrative Personnel to manage the office, type reports, assist in purchasing and issuing supplies and keeping records. A driver is also employed on full time, to assist in taking staff to the various places for field investigations and public consultations; and collection and delivery of office documents. Below is Matex International's organizational structure:

## Matex International Organisation Structure



## Matex International Company Profile

### 2.0. CONSULTANT’S EXPERIENCE

Some of the “Key” projects that the firm has been involved are provided in the table below

Project Name	Environmental and Social Impact Assessment	Environmental and Social Management Plan	Environmental and Social Management Framework	Environmental Audit	Resettlement Action Plan	Environmental Health and Safety	Occupational Safety and Health
Upgrading of Four Technical and Vocational Education and Training (TEVET) Colleges in Malawi Under Zantchito Programme by UNOPS	x	x					
Upgrading ESIA's for Mwenilondo and Dwambazi Irrigation Schemes under the Malawi Food Systems Resilience Programme (MFSRP)	x						
Restore Africa (RESAF) – Restoring Landscapes and Livelihoods in Malawi Project by Catholic Relief Services (CRS)	x						
Construction and Operation of Students’ Hostels at Mzuzu University Campus	x						
Installation and	x						



## Matex International Company Profile

Project Name	Environmental and Social Impact Assessment	Environmental and Social Management Plan	Environmental and Social Management Framework	Environmental Audit	Resettlement Action Plan	Environmental Health and Safety	Occupational Safety and Health
Operation of a 50MW Photovoltaic Solar Plant at Nkhoma, Lilongwe							
Installation and Operation of a 34MW Solar PV/50 MWh Energy Storage System in Zomba	x						
Installation and Operation of a 20MW Solar Powered Plant in Monkey Bay, Mangochi	x						
Installation and Operation of Chintheche Solar Power Plant 50 MW in Nkhatabay District	x						
Establishment of a 150-MW Windfarm in Chipumulo – Chikhwengwe	x						
Construction of an Industrial Park at Chigumula in Blantyre District	x						
Conduril Engenharia SA's Campsite and its Operations in Chikwawa District				x			





## Matex International Company Profile

Project Name	Environmental and Social Impact Assessment	Environmental and Social Management Plan	Environmental and Social Management Framework	Environmental Audit	Resettlement Action Plan	Environmental Health and Safety	Occupational Safety and Health
Installation and Operation of Pharmaceutical Incinerator at Njewa in Lilongwe District		x					
Construction of a Star Commercial Complex along Chileka Road at Kameza an Blantyre City	x						
Development and Operation of a Semi-intensive Fish Farm at Mchemela in Dowa District	x						
Development and Operation of an Events Complex Facility in Area 32, Lilongwe City		x					
Installation and Operation of a Medical Oxygen and Nitrogen Manufacturing Plant		x					
Construction and Operation of Paphiri Fuel Station in Lumbadzi, Lilongwe		x					
Installation and Operation of a Rice Processing Factory for		x					



## Matex International Company Profile

Project Name	Environmental and Social Impact Assessment	Environmental and Social Management Plan	Environmental and Social Management Framework	Environmental Audit	Resettlement Action Plan	Environmental Health and Safety	Occupational Safety and Health
Kajikhomele Foundation Limited in T/A Kyungu, Karonga District							
Development of a 400-hectare Irrigation Scheme at Mchemela in Dowa and Rice Processing Factory at Santhe in Kasungu under Mtalimanja Holdings Limited	x						
Sustainable Rural Water and Sanitation Infrastructure for Improved Health and Livelihoods (SRWSIHL) Project in Rumphu, Nkhotakota, Ntcheu, Phalombe and Mulanje				x			
Environmental and Social Impact Assessment and Land Reorganisation Exercise for Mtalimanja Sugar Estates	x						
Preparation of Safeguard Documents for Agricultural Productivity Program for Southern	x				x		



## Matex International Company Profile

Project Name	Environmental and Social Impact Assessment	Environmental and Social Management Plan	Environmental and Social Management Framework	Environmental Audit	Resettlement Action Plan	Environmental Health and Safety	Occupational Safety and Health
Africa (APPSA)							
Raising and Rehabilitation of Kamuzu Dam I	x				x		
Agriculture Sector Wide Approach Support Project (ASWAp-SP)	x				x		
Financial Access for Rural Markets, Smallholders and Enterprise (FARMSE)			x				
Installation and Operation of a Cannabinoids Extraction Plant	x						
Thawale Quarry Mining Project at Kanyenyeva in Salima District	x						
Installation and Operation of a Soy Milk Extraction Plant by Lilongwe Dairy	x						
Operation of a Dairy Processing Factory in Area 5, Lilongwe City and Milk Collection Depot at Goliati in Thyolo District by				x			



## Matex International Company Profile

Project Name	Environmental and Social Impact Assessment	Environmental and Social Management Plan	Environmental and Social Management Framework	Environmental Audit	Resettlement Action Plan	Environmental Health and Safety	Occupational Safety and Health
Lilongwe Dairy							
Malawi Gold Project – Cultivation and Processing of Medicinal Cannabis under Solar Powered Indoor and Outdoor Irrigation	x						
Two Intake Weirs in Lunyangwa River for Mzuzu City and Ekwendeni Township	x						
Jenda and Chilumba Water Supply Schemes.	x						
Installation and Operation of a Granular Fertilizer Production Factory in Liwonde, Machinga District	x						
Construction of Ekwendeni Water Treatment Plant, Service tanks, Installation of Distribution System in Ekwendeni and Mzuzu, and Installation of Pumping System to Lusangadzi in Mzuzu		x					
Construction of 180 Safe, Green and Climate		x					



## Matex International Company Profile

Project Name	Environmental and Social Impact Assessment	Environmental and Social Management Plan	Environmental and Social Management Framework	Environmental Audit	Resettlement Action Plan	Environmental Health and Safety	Occupational Safety and Health
Resilient Houses, and Restoration of Essential Infrastructure in Zomba and Phalombe Districts							
Agriculture Productivity Program for Southern Africa	x				x		
Bimbi Irrigation Scheme Project	x						
Operation of a 5 million-litre Fuel Storage Facility in Makata, Blantyre city by SIMSO Oil Company Limited				x			
Construction of Eleven Irrigation Schemes under Agriculture Infrastructure Support Project	x						
Construction and Operation of Brighto Fuel Station at Liwonde Village, T/A Kanduku in Mwanza District		x					
Development of an Environmental Health and Safety Workplace Policy for Maone Fuel Service Station along						x	



## Matex International Company Profile

Project Name	Environmental and Social Impact Assessment	Environmental and Social Management Plan	Environmental and Social Management Framework	Environmental Audit	Resettlement Action Plan	Environmental Health and Safety	Occupational Safety and Health
Blantyre-Zomba Road in Blantyre City							
Recommissioning of SIMSO Oil Company Limited Filling Station in Kaporo, Karonga District		x					
Construction and Operation of SIMSO Oil Company Fuel Filing Station on Plot 47/923 in Area 47, Lilongwe		x					
Shire Valley Transformation Programme (SVTP), Phase 1: Detailed Design of Main Canal 2- Bangula Section, Lengwe National Park Section and Secondary Canals in Phase II		x			x		
SVTP, Phase 1: Detailed Design of Main Canal 3, Secondary Canals and Remaining Works		x					
Training in Occupational Safety and Health, and Provision of Guidelines on the Development of an Occupational Safety							x



## Matex International Company Profile

Project Name	Environmental and Social Impact Assessment	Environmental and Social Management Plan	Environmental and Social Management Framework	Environmental Audit	Resettlement Action Plan	Environmental Health and Safety	Occupational Safety and Health
and Health Policy for Tilitonse Foundation							



## Matex International Company Profile

### 3.0. SOME OF MATEX INTERNATIONAL'S PROJECTS CONDUCTED IN DETAIL

No.	Assignment Name	Brief Project Description	Detailed Services Provided	Client
1	Upgrading of Four Technical and Vocational Education and Training (TEVET) Colleges in Malawi Under Zantchito Programme	<p>The Government of Malawi has observed that improving skills development through appropriate technical, entrepreneurial, and vocational programming and policy support is one major option that will guarantee an increased number of skilled persons to enhance national employment and competitiveness. In this context, Zantchito, a Skills for Job Programme, whose objective is to facilitate skills development improvement through TEVET as a component of enhancing national employment and competitiveness, came on board to support the strengthening and practical implementation of Malawi's (TEVET) policy through a set of effective system appraisals and piloting of sectoral skills development within crucial sectors of the economy such as agriculture, energy, construction, and tourism. By focusing on improving access to vocational skills for young people, the project aligns directly with the goal of achieving inclusive and high-quality education for everyone. UNOPS, with its experience in implementing infrastructure projects, has been approached to support the programme in the following categories: providing new buildings for training centres, supplying and installing quality equipment, and developing a maintenance program in four TEVET institutions namely: Mzuzu Technical, Salima Technical, Lilongwe Technical and Malawi Institute of Tourism. Matex International has been</p>	<ul style="list-style-type: none"> <li>• Desk study/literature review of relevant national legal and policy framework related to the project;</li> <li>• Developed a detailed stakeholder engagement and consultation plan;</li> <li>• A thorough review and analyzed project designs and specifications, materials, equipment, processes, technologies and machinery to be used and provide a thorough analysis of project alternatives;</li> <li>• Conducted field investigations to identify the existing bio-physical and socio-economic conditions of the proposed project area including geology, soil,</li> </ul>	United Nations Office for Project Services (UNOPS)





## Matex International Company Profile

No.	Assignment Name	Brief Project Description	Detailed Services Provided	Client
		<p>hired to conduct an ESIA for Salima Technical and ESMPs for the other three institutions.</p>	<p>site topography, water resources, drainage systems, temperature and rainfall patterns, energy supply, demographic trends, health condition, socio-economic activities etc.;</p> <ul style="list-style-type: none"> <li>• Conducted baseline socio-economic household surveys with surrounding communities;</li> <li>• Conducted comprehensive consultations with relevant key stakeholders i.e., client, government MDAs i.e., Ministry of Labour, TEVETA, NCIC, Blantyre, Lilongwe and Mzuzu City Council, Salima District Council, regulatory entities i.e., MEPA, PAPs, local</li> </ul>	



## Matex International Company Profile

No.	Assignment Name	Brief Project Description	Detailed Services Provided	Client
			<p>chiefs, surrounding communities;</p> <ul style="list-style-type: none"> <li>• Identified potential environmental and social impacts from project activities;</li> <li>• Proposed appropriate enhancement and mitigation measures for the identified impacts;</li> <li>• Developed an Environmental and Social Management and Monitoring Plans; and</li> <li>• Prepared ESMP and ESIA Reports.</li> </ul>	
2	Upgrading ESIA's for Mwenilondo and Dwambazi Irrigation Schemes under the Malawi Food Systems Resilience Programme	The Government of Malawi, with financial support from the World Bank Group (WBG) through the MFSRP-a successor project of Agriculture Commercialization Project (AGCOM), intends to increase commercialization of the agriculture value chains through implementation of medium and long-term resilience building interventions including large scale irrigation. With agriculture dominating economic activity in the rural areas and highly susceptible to climate shocks, Malawi will need to increase its agricultural production substantially and sustainably to feed the growing population	<ul style="list-style-type: none"> <li>• Revised the regulatory and policy framework, with focus on the WBG Environmental and Social Framework (ESF) to identify all the gaps between national and World Bank ESF requirements;</li> <li>• Revised and updated the</li> </ul>	Ministry of Agriculture



## Matex International Company Profile

No.	Assignment Name	Brief Project Description	Detailed Services Provided	Client
	(MFSRP)	<p>which relies heavily on rain fed agriculture. Moreover, the country has a considerable dormant potential for expansion of large-scale irrigated crop production which if properly utilized could shift production from subsistence to commercialization in line with the aspirations of Malawi 2063. Dwambazi irrigation scheme will directly benefit 3,100 smallholder farmers and Mwenilondo irrigation scheme will directly benefit 634 smallholder farmers. ESIA's for two irrigation schemes were conducted and reports were developed in 2021 under the Programme for Rural Irrigation Development (PRIDE) with funding from Irrigation Fund for Agriculture Development (IFAD) in compliance with their Social, Environment and Climate Assessment Procedures (SECAP). Since the MFSRP is funded by the WBG and development of the proposed irrigation scheme, as part of the project, has to be in line with WBG ESS requirements. The updated ESIA reports identified gaps and how they were addressed in line with the applicable ESSs.</p>	<p>methodology for screening, categorization and typology of the two irrigation development projects in accordance to ESF requirements;</p> <ul style="list-style-type: none"> <li>• Updated the baseline to reflect any changes that have taken place since the last ESIA;</li> <li>• Updated stakeholder engagement plan by re-engaged and consultations surrounding communities;</li> <li>• Updated mitigation measures to address and manage the potential environmental and social risks and impacts; developed environmental and social management and monitoring plans for similar impact</li> </ul>	



## Matex International Company Profile

No.	Assignment Name	Brief Project Description	Detailed Services Provided	Client
			<ul style="list-style-type: none"> <li>typologies; and</li> <li>• Prepared safeguard documents for the two irrigation schemes including the Gender Based Violence Management Plan, Child Safety Management Plan, Code of Conduct and Labour Influx Management Plan.</li> </ul>	
3	ESIA for the RESAF Project	<p>Global Evergreening Alliance (GEA) is implementing the RESAF Project in Malawi, an afforestation and reforestation (carbon sequestration) project aimed at sustainably restoring degraded lands, improve sustainability, profitability and reliability of smallholder farming systems. The project will restore 350,000 hectares of degraded land by planting and regenerating 15.5 million trees targeting to benefit 380,000 households across 7 districts (Chitipa, Mzimba, Ntcheu, Neno, Mangochi, Machinga and Zomba) to sequester 11.35 million tonnes of carbon dioxide equivalent (tCO<sub>2</sub>e) and generate 8.5 million Verified Carbon Units (VCUs) over a 30-year crediting period.</p> <p>The project will be implemented by 8 consortium partners led by CRS as a consortium lead implementing partner (IP), Self</p>	<ul style="list-style-type: none"> <li>• Reviewed relevant documentation including environmental legislation and framework, project documents (RESAF Project Brief Note, RESAF Malawi Socioeconomic Baseline Study and RESAF Malawi Implementation Strategy), IFC Performance Standards Guidance on Environmental and</li> </ul>	CRS



## Matex International Company Profile

No.	Assignment Name	Brief Project Description	Detailed Services Provided	Client
		<p>Help Africa (SHA) implementing in Chitipa, Total Land Care (TLC) implementing in Mzimba, World Vision implementing in Ntcheu, CADECOM implementing in Neno, CARE International implementing in Mangochi, OSSEDI implementing in Zomba and Machinga Districts, and Centre for International Forestry Research and World Agroforestry (CIFOR ICRAF) as technical partner in the consortium</p>	<p>Social Sustainability, Gold Standards for Carbon Project Certification and International and Multilateral Environmental Agreements, Conventions and Treaties;</p> <ul style="list-style-type: none"> <li>• Developed a Stakeholder Engagement Plan;</li> <li>• Conducted site assessments in the project areas to identify potential risks and impacts of the project activities and proposed cost-effective and sustainable mitigation measures;</li> <li>• Developed an ESMP and monitoring plan for the identified mitigation measures;</li> <li>• Conducted</li> </ul>	



## Matex International Company Profile

No.	Assignment Name	Brief Project Description	Detailed Services Provided	Client
			<p>comprehensive stakeholder consultations with the Financier, IPs, Department of Forestry, Department of Land Resource Conservation, Ministry of Labour, MEPA, District Councils, ADCs, VDCs and households; and</p> <ul style="list-style-type: none"> <li>• Prepared an ESIA report for the project.</li> </ul>	
4	ESIA for the Installation and Operation of a 50MW Photovoltaic Solar Plant at Nkhoma, Lilongwe	Press Corporation intends to install a 50 Megawatt (MW) solar photovoltaic power generation plant at Nkhoma, in Lilongwe District. The company secured an approval from the Electricity Supply Corporation of Malawi (ESCOM), to connect to the 132KV busbar at its Nkhoma substation after the implementation of the Malawi-Mozambique 400 KV transmission interconnection project. The project will take about 10 months to construct and is expected to commence in March 2024. It is expected that the project will employ 10 people during planning phase 240 workers during construction phase and 14 workers during operation phase	<ul style="list-style-type: none"> <li>• Conducted desk study/literature review of i.e., review of national legal and policy framework relevant for the project;</li> <li>• Identification of the existing bio-physical and socio-economic conditions of the proposed project area in terms of geology, soil, site topography,</li> </ul>	Press Corporation Limited



## Matex International Company Profile

No.	Assignment Name	Brief Project Description	Detailed Services Provided	Client
			<p>drainage systems, temperature and rainfall patterns etc.;</p> <ul style="list-style-type: none"> <li>• Public engagement, stakeholder mapping and consultations with relevant key informants i.e., Focus Group Discussions with local chiefs, mother groups, VDCs and Lilongwe District Council;</li> <li>• Conducted baseline socio-economic surveys with surrounding communities;</li> <li>• Review of national legal and policy framework relevant for the project;</li> <li>• Review of project documents for the proposed project designs and provide a thorough analysis of project alternatives;</li> <li>• Field investigations to</li> </ul>	



## Matex International Company Profile

No.	Assignment Name	Brief Project Description	Detailed Services Provided	Client
			<p>identify potential environmental and social impacts from project activities;</p> <ul style="list-style-type: none"> <li>• Determination of appropriate enhancement and mitigation measures;</li> <li>• Development of an Environmental and Social Management and Monitoring Plan; and</li> <li>• Prepared Environmental and Social Impact Assessment Report.</li> </ul>	
5	ESIA for the Installation and Operation of a 34MW Solar PV/50 MWh Energy Storage System in Zomba	<p>Greencells Group Holdings, a successful EPC and independent power producer, intends to install a 34-megawatt (MW) hybrid solar photovoltaic power generation facility with 50 megawatt-hour (MWh) energy storage battery on a private estate (Mpalanganga Estate) at Changalume Turn Off in Zomba District to be located at Mpalanganga Estate and south-west of the Changalume ESCOM sub-station. Electricity demand is estimated to be more than 700 MW (Malawi Government, 2018). However, the installed capacity for electricity generation is much less than the required electricity. Out of the MW generated in the country, 99% is cascaded along the Shire River. Based on the failure of</p>	<ul style="list-style-type: none"> <li>• Conducted desk study/literature review of i.e., review of national legal and policy framework relevant for the project;</li> <li>• Identification of the existing bio-physical and socio-economic conditions of the proposed project area in terms of geology, soil,</li> </ul>	Greencells Group Holdings





## Matex International Company Profile

No.	Assignment Name	Brief Project Description	Detailed Services Provided	Client
		<p>installed capacities to guarantee energy security for Malawi, the national government developed an Independent Power Producer (IPP) Framework. In line with this Framework and inadequate power generation, Greencells intended to develop and operate the hybrid solar power generation facility that will feed into the nearby sub-station, and subsequently be distributed through the national grid system by ESCOM.</p>	<p>site topography, drainage systems, temperature and rainfall patterns etc.;</p> <ul style="list-style-type: none"> <li>• Public engagement, stakeholder mapping and consultations with relevant key informants i.e., Focus Group Discussions with local chiefs and Zomba District Council;</li> <li>• Conducted baseline socio-economic surveys with surrounding communities;</li> <li>• Review of national legal and policy framework relevant for the project;</li> <li>• Review of project documents for the proposed project designs and provide a thorough analysis of project alternatives;</li> <li>• Field investigations to</li> </ul>	



## Matex International Company Profile

No.	Assignment Name	Brief Project Description	Detailed Services Provided	Client
			<p>identify potential environmental and social impacts from project activities;</p> <ul style="list-style-type: none"> <li>• Determination of appropriate enhancement and mitigation measures;</li> <li>• Development of an Environmental and Social Management and Monitoring Plan; and</li> <li>• Prepared Environmental and Social Impact Assessment Report.</li> </ul>	
6	ESIA for the Installation and Operation of a 20 MW Solar Powered Plant in Monkey Bay, Mangochi	Droege Energy plans to establish a 20-megawatt solar powered plant in Monkey Bay. The proposed project involves the construction and operation of a 20 MWp Monkey Bay Solar Plant (“the Project”) and 2 MWh of Lithium-Ion Battery Storage. The solar technology selected for solar panels are built on photovoltaic monocrystalline cells. This type of panel has been in industry for more time than the Polycrystalline. Both types come from crystalline silicon, but monocrystalline panels have the highest efficiency rates. The generated electricity, about 33.68 GWh/year, will be fed into the existing grid network of Malawi. The construction phase will involve installation of 370 Wp Monocrystalline Panels, and 3 MVA	<ul style="list-style-type: none"> <li>• Field investigations including site assessments, stakeholder mapping and consultations and public consultative meetings;</li> <li>• Identification of the existing physical and socio-economic environment of the proposed area in terms of geology, soil, site</li> </ul>	Droege Energy



## Matex International Company Profile

No.	Assignment Name	Brief Project Description	Detailed Services Provided	Client
		<p>inverters. The project will be deployed in floatable structures that will create a 20-ha island near the shore of the Lake Malawi.</p>	<p>topography, water resources, vegetation, temperature and rainfall patterns;</p> <ul style="list-style-type: none"> <li>• Conducted baseline household socio-economic surveys;</li> <li>• Review of national legal and policy framework relevant to the project;</li> <li>• Identification, assessment and evaluation of potential adverse impacts of the proposed project;</li> <li>• Determination of appropriate mitigation and enhancement measures;</li> <li>• Development of an Environmental Management and Monitoring Plan; and</li> <li>• Prepared final Environmental and Social Impact</li> </ul>	



## Matex International Company Profile

No.	Assignment Name	Brief Project Description	Detailed Services Provided	Client
			Assessment Report	
7	ESIA for the Installation and Operation of Chintheche Solar Power Plant 50 MW in Nkhatabay District	Droege Energy plants to establish a 25-megawatt solar powered plant in Chintheche Nkhata Bay. The proposed project involves the construction and operation of a 20 MWp Monkey Bay Solar Plant (“the Project”) and 2 MWh of Lithium-Ion Battery Storage. The solar technology selected for solar panels are built on photovoltaic monocrystalline cells. This type of panel has been in industry for more time than the Polycrystalline. Both types come from crystalline silicon, but monocrystalline panels have the highest efficiency rates. The generated electricity, about 33.68 GWh/year, will be fed into the existing grid network of Malawi. The construction phase will involve installation of 370 Wp Monocrystalline Panels, and 3 MVA inverters.	<ul style="list-style-type: none"> <li>• Field investigations including site assessments, stakeholder mapping and consultations and public consultative meetings;</li> <li>• Identification of the existing physical and socio-economic environment of the proposed area in terms of geology, soil, site topography, water resources, vegetation, temperature and rainfall patterns;</li> <li>• Conducted baseline household socio-economic surveys;</li> <li>• Review of national legal and policy framework relevant to the project;</li> <li>• Identification, assessment and evaluation of potential</li> </ul>	Droege Energy



## Matex International Company Profile

No.	Assignment Name	Brief Project Description	Detailed Services Provided	Client
			<p style="text-align: center;">adverse impacts of the proposed project;</p> <ul style="list-style-type: none"> <li>• Determination of appropriate mitigation and enhancement measures;</li> <li>• Development of an Environmental Management and Monitoring Plan; and</li> <li>• Prepared final Environmental and Social Impact Assessment Report</li> </ul>	
8	ESIA for the Establishment of a 150-MW Windfarm in Chipumulo – Chikhwengwe	<p>The proposed project involves the construction and operation of a 150 MW electricity generation plant making use of wind turbines. The generated electricity, about 169.13 GWh, will be fed into the existing grid network of Malawi. The construction phase will involve erection of 60 wind turbines, of 2.5 MW each on 100 m high self-supported mono-poles. Subject to the final micro-siting, since the wind at the project site is predominantly from the south east, the wind turbines would be installed in a linear layout: 6 rows of 10 wind turbines each; the wind turbines separated up to 500 m with rows and up to 600 m between rows</p>	<ul style="list-style-type: none"> <li>• Field investigations including site assessments, stakeholder mapping and consultations and public consultative meetings;</li> <li>• Identification of the existing physical and socio-economic environment of the proposed area in terms of geology, soil, site</li> </ul>	



## Matex International Company Profile

No.	Assignment Name	Brief Project Description	Detailed Services Provided	Client
			<p>topography, water resources, vegetation, temperature and rainfall patterns;</p> <ul style="list-style-type: none"> <li>• Conducted baseline household socio-economic surveys;</li> <li>• Review of national legal and policy framework relevant to the project;</li> <li>• Identification, assessment and evaluation of potential adverse impacts of the proposed project;</li> <li>• Determination of appropriate mitigation and enhancement measures;</li> <li>• Development of an Environmental Management and Monitoring Plan; and</li> <li>• Prepared final Environmental and Social Impact</li> </ul>	



## Matex International Company Profile

No.	Assignment Name	Brief Project Description	Detailed Services Provided	Client
			Assessment Report	
9	Environmental and Social Management Framework for the Financial Access for Rural Markets, Smallholders and Enterprises (FARMSE)	<p>The Government of Malawi through the Ministry of Finance with financial support from International Fund for Agricultural Development (IFAD) is implementing FARMSE, a seven-year programme. The overall programme goal is to reduce poverty, improve livelihoods and enhance the resilience of rural households on a sustainable basis. The Programme’s development objective is to increase access to, and use of, a range of sustainable financial services by rural households and micro, small, and medium enterprises (MSMEs). The programme targets to support approximately 432,774, of which, an estimated 45% will be women, and at least 20% will be youth and the programme will be implemented nation-wide.</p> <p>The programme has three components:</p> <ul style="list-style-type: none"> <li>▪ Component 1 – Ultra-Poor graduation and scaling up, which is supporting on-going government efforts in developing and delivering effective graduation programmes in rural areas to reduce extreme poverty levels among both ultra-poor labour constrained and non-labour constrained households;</li> <li>▪ Component 2 – Support to Financial Innovation and Outreach, which seeks to overcome numerous barriers to financial services to the rural poor by supporting the development of informal and formal financial services</li> </ul>	<ul style="list-style-type: none"> <li>• Conducted a systematic review of national, regional, and international laws, policies, and regulations relevant to FARMSE project taking into consideration new laws that have been enacted in Malawi;</li> <li>• A systematic and clear methodology for screening programme sub-project activities for environmental and social consideration;</li> <li>• Procedures for predicting and assessing potential positive and negative impacts and proposed appropriate enhancement and mitigation measures;</li> <li>• A generic environmental and social management</li> </ul>	Ministry of Finance



## Matex International Company Profile

No.	Assignment Name	Brief Project Description	Detailed Services Provided	Client
		<p>best suited to ultra-poor non-labour constrained, poor but food secure, vulnerable to poverty, and low income but resilient to poverty households with an emphasis on savings and credit for on and off farm enterprise; and</p> <ul style="list-style-type: none"> <li>▪ Component 3 – Strategic Partnerships, Knowledge Generation and Policy, is aimed at increasing the capacity and knowledge bases of rural financial sector support organizations.</li> </ul>	<p>plan for addressing negative impacts during implementation of sub-project activities;</p> <ul style="list-style-type: none"> <li>• Capacity, training, and technical assistance needs to implement the requirements of the ESMF;</li> <li>• Monitoring and evaluation system with appropriate roles and responsibilities of government departments and lead agencies, and outline the necessary reporting procedures for implementation of mitigation measures;</li> <li>• Conducted socio-economic household surveys with project beneficiaries; and</li> <li>• Recommended capacity building measures for environmental and social</li> </ul>	





## Matex International Company Profile

No.	Assignment Name	Brief Project Description	Detailed Services Provided	Client
			<p>planning and monitoring of the sub-project activities.</p>	
10	<p>Environmental and Social Compliance Audit for the Sustainable Rural Water and Sanitation Infrastructure for Improved Health and Livelihoods (SRWSIHL) Project</p>	<p>The Government of Malawi through the Ministry of Water and Sanitation, with financial support from the African Development Bank (AfDB), implemented the SRWSIHL Project in five districts, namely: Rumphu, Nkhotakota, Ntcheu, Mangochi and Phalombe. The overall goal of the project was to improve health and livelihoods of the marginalized rural population growth through provision of sustainable water supply and improved sanitation by constructing of sanitary facilities in schools, market centres and health centres and drilling of boreholes. The main objective of the consultancy was to assess compliance of the project with AfDB's Environmental and Social Safeguard policies as well as Malawi Government environmental management laws</p>	<ul style="list-style-type: none"> <li>• Reviewed relevant environmental legislation and framework related to the project including Malawi's Environment Management Act, National Construction Industry Act and AfDB's Environmental and Social Safeguards;</li> <li>• Conducted inspection for 12 gravity-fed water supply schemes' newly constructed and rehabilitated infrastructure i.e., reinforced concrete storage and sedimentation tanks, communal water points, Water Users' Association (WUA) office blocks,</li> </ul>	<p>Ministry of Water and Sanitation</p>



## Matex International Company Profile

No.	Assignment Name	Brief Project Description	Detailed Services Provided	Client
			<p>transmission pipelines, intake structures (weirs), and public sanitation facilities for schools, markets and health centres in the five districts;</p> <ul style="list-style-type: none"> <li>• Conducted socio-economic and biophysical assessments to identify environmental and social changes that occurred due to activities in the project areas;</li> <li>• Conducted stakeholder mapping and consultations with project beneficiaries, Project Implementing Unit (PIU) and relevant District Councils;</li> <li>• Identified compliances and non-compliance of the project and developed a corrective</li> </ul>	



## Matex International Company Profile

No.	Assignment Name	Brief Project Description	Detailed Services Provided	Client
			<ul style="list-style-type: none"> <li>• action plan; and</li> <li>• Prepared a comprehensive environmental and social compliance audit report.</li> </ul>	
11	ESIA for the development and operation of a 400-hectare irrigation scheme at Mchemela in Dowa and agro-processing factories at Santhe in Kasungu District	Mtalimanja Holdings Limited (MHL) intends to develop a 400-hectare irrigation scheme at Santhe in Kasungu and Chakhadza in Dowa for purposes of growing rice, ground nuts and maize, and establishment of agro-processing factories for value addition. The project will involve, the development of the irrigation scheme, installation of rice processing factory, peanut butter production factory and maize flower milling factory. The crops to be grown at the irrigation scheme will mainly be rice, maize and groundnuts. The main activities during operation and maintenance phase of the factories will involve dry processing of the agricultural produce for value addition. The proposed site for the agro-processing factories and warehousing is 20 hectares and will be located at Santhe Trading Centre. The broad objective of the project, is to contribute to poverty reduction by enhancing agricultural productivity in the area, increase income levels to the direct and indirect project beneficiaries, increased food security among beneficiaries of these two districts and beyond targeting 3,000 beneficiaries for the next five years	<ul style="list-style-type: none"> <li>• Undertook field investigations on current land administration and allocation and assessed how the current practices will be impacted by the reorganisation of farmers to get their customary land secured under the new Lands Act and Lands (Acquisition) Act;</li> <li>• Identification of the existing bio-physical and socio-economic conditions of the proposed project area in terms of geology, soil, site topography, drainage systems, temperature and rainfall patterns etc.;</li> <li>• Public engagement,</li> </ul>	Mtalimanja Holdings Limited



## Matex International Company Profile

No.	Assignment Name	Brief Project Description	Detailed Services Provided	Client
			<p>stakeholder mapping and consultations with relevant key informants i.e., Focus Group Discussions with local chiefs and District Councils;</p> <ul style="list-style-type: none"> <li>• Conducted baseline socio-economic surveys with project beneficiaries;</li> <li>• Reviewed national legal and policy framework relevant for the project;</li> <li>• Reviewed project documents for the proposed irrigation system and factories designs and provide a thorough analysis of project alternatives;</li> <li>• Field investigations to identify potential environmental and social impacts from project activities of the</li> </ul>	



## Matex International Company Profile

No.	Assignment Name	Brief Project Description	Detailed Services Provided	Client
			irrigation scheme and agro-processing factories; <ul style="list-style-type: none"> <li>• Determination of appropriate enhancement and mitigation measures;</li> <li>• Developed Environmental and Social Management and Monitoring Plan; and</li> <li>• Prepared Environmental and Social Impact Assessment Report.</li> </ul>	
12	Environmental and Social Impact Assessment for the installation and operation of a Cannabinoid Extraction Plant	Malawi Medicinal Cannabis Limited (MMC Limited) with shareholding from Mbabzi Estate and MMC Laboratories from United Kingdom intends to develop cannabinoids extraction plant at Mbabzi Estates in Sub Traditional Authority Njewa, Lilongwe to process 48 tonnes of cannabis biomass annually to produce Active Pharmaceutical Ingredient (API) products for the global pharmaceutical industry. MMC Limited appointed Matex International to conduct Environmental and Social Impact Assessment (ESIA) for the proposed project.	<ul style="list-style-type: none"> <li>• Field investigations including site assessments, stakeholder mapping and consultations and public consultative meetings;</li> <li>• Identification of the existing physical and socio- economic environment of the proposed area in terms of geology, soil, site topography, water</li> </ul>	MMC Laboratories



## Matex International Company Profile

No.	Assignment Name	Brief Project Description	Detailed Services Provided	Client
			<p>resources, vegetation, temperature and rainfall patterns;</p> <ul style="list-style-type: none"> <li>• Conducted baseline household socio-economic surveys;</li> <li>• Review of national legal and policy framework relevant to the project;</li> <li>• Identification, assessment and evaluation of potential adverse impacts of the proposed project;</li> <li>• Determination of appropriate mitigation and enhancement measures;</li> <li>• Development of an Environmental Management and Monitoring Plan; and</li> <li>• Prepared final Environmental and Social Impact Assessment Report.</li> </ul>	



## Matex International Company Profile

No.	Assignment Name	Brief Project Description	Detailed Services Provided	Client
13	ESIA for the Installation and Operation of a Soy Milk Extraction Plant	<p>LDL intends to install and operate a soy extraction plant within Lilongwe Dairy (2001) Limited premises in Area 5 Industrial Area, Lilongwe City. Lilongwe Dairy (2001) Limited (LDL) is the largest dairy processor in Malawi. It produces various milk and milk products such as Ultra High Temperature (UHT) milk, yogurt, dairy juice blends, butter, cheese, and creams. LDL has over 60% of the raw milk market share and over 70% of the processed milk market share. To further expand their product range and output, LDL plans to install a wholesome soya milk extraction plant adjacent to their existing plant. The extraction plant will process whole soybeans to increase the fiber and protein content of soya milk products, which is beneficial to consumers whilst eliminating waste with a total capacity of 4,000 kg of soya milk per hour</p>	<ul style="list-style-type: none"> <li>• Field investigations including site assessments, stakeholder mapping and consultations and public consultative meetings;</li> <li>• Identification of the existing physical and socio- economic environment of the proposed area in terms of geology, soil, site topography, water resources, vegetation, temperature and rainfall patterns;</li> <li>• Review of national legal and policy framework relevant to the project;</li> <li>• Identification, assessment and evaluation of potential adverse impacts of the proposed project;</li> <li>• Determination of appropriate mitigation</li> </ul>	Lilongwe Dairy (2001) Limited



## Matex International Company Profile

No.	Assignment Name	Brief Project Description	Detailed Services Provided	Client
			<p style="text-align: center;">and enhancement measures;</p> <ul style="list-style-type: none"> <li>• Development of an Environmental Management and Monitoring Plan; and</li> <li>• Prepared final Environmental and Social Impact Assessment Report.</li> </ul>	
14	ESIA for the Development and Operation of Mulalo Semi-intensive Fish Farm at Mchemela in Dowa District	Mtalimanja Holdings Limited (MHL) intends to establish semi-intensive fish farm at Mchemela in Dowa District. The proposed fish farm will be developed on a 40-acre land, a portion under Santhe Irrigation Scheme which is currently under rice production. The fish farm will have an annual fish production capacity of 1,000 tons for domestic, regional and international markets. The total project cost for the project is estimated to be MKW650,000,000 and will create 60 direct employment opportunities where 50% of the total workforce will be women.	<ul style="list-style-type: none"> <li>• Conducted a thorough review and analysis of project designs and specifications and other project documents;</li> <li>• Conducted desk study and literature review of relevant legal and policy framework and safeguards;</li> <li>• Field investigations of the biophysical and socio-economic environment of the project area;</li> <li>• Conducted baseline</li> </ul>	





## Matex International Company Profile

No.	Assignment Name	Brief Project Description	Detailed Services Provided	Client
			<p>socio-economic household surveys with project beneficiaries and PAPs;</p> <ul style="list-style-type: none"> <li>• Conduct stakeholder mapping and consultations with relevant stakeholders including the District Council, VDCs and other mother groups in the project area;</li> <li>• Identified potential environmental and social impacts that may occur during implementation of the proposed project activities, and propose mitigation/enhancement measures;</li> <li>• Developed an Environmental and Social Management Plan (ESMP); and</li> <li>• Prepared a comprehensive ESIA report.</li> </ul>	



## Matex International Company Profile

No.	Assignment Name	Brief Project Description	Detailed Services Provided	Client
15	Installation and Operation of a Medical Oxygen and Nitrogen Manufacturing Plant by Oxytech Limited	<p>Oxytech Limited, a subsidiary of Santa Plaza Group Limited, intends to install and operate a medical manufacturing plant for oxygen and nitrogen and supply the gas for medical use in Malawi's hospitals, health centres and various institutions. This initiative aims at providing support and assistance to the government in the health sector which is facing challenges in supply of medical oxygen and nitrogen due to the rapid growth in demand in recent years. The client will be distributing and supplying the oxygen to certified wholesalers and retailers across all cities in the country.</p>	<ul style="list-style-type: none"> <li>• Field investigations including site assessments, stakeholder mapping and consultations and public consultative meetings;</li> <li>• Identification of the existing physical and socio- economic environment of the proposed area in terms of geology, soil, site topography, water resources, vegetation, temperature and rainfall patterns;</li> <li>• Review of national legal and policy framework relevant to the project;</li> <li>• Review of national legal and policy framework relevant to the project;</li> <li>• Identification, assessment and evaluation of potential adverse impacts of the</li> </ul>	



## Matex International Company Profile

No.	Assignment Name	Brief Project Description	Detailed Services Provided	Client
			<ul style="list-style-type: none"> <li>proposed project;</li> <li>• Determination of appropriate mitigation and enhancement measures;</li> <li>• Development of an Environmental Management and Monitoring Plan; and</li> <li>• Prepared a comprehensive ESMP Report.</li> </ul>	
16	ESMP for the Construction of Ekwendeni Water Treatment Plant, Service tanks, Installation of Distribution System in Ekwendeni and Mzuzu, and Installation of Pumping	The NRWB, as a parastatal organization of the Government of Malawi, is mandated to provide potable water supply and waterborne sanitation services to the urban centres of the Northern Region of Malawi. Due to the ever-growing water demand in Mzuzu city and Ekwendeni township, the NRWB implemented the Malawi Water Efficiency Project with funding from the European Investment Bank (EIB). The main goal of the project was to increase potable water supply for Mzuzu city and Ekwendeni township. The project involved construction of Ekwendeni Water Treatment Plant, rehabilitation and construction of new service and reservoir tanks, installation of a pumping and pipeline distribution system.	<ul style="list-style-type: none"> <li>• The main assignment tasks involved were reviewing of national legal and policy framework, project designs and specifications and providing a thorough analysis of project alternatives;</li> <li>• Field investigations to identify the existing bio-physical and socio-economic conditions of</li> </ul>	NRWB



## Matex International Company Profile

No.	Assignment Name	Brief Project Description	Detailed Services Provided	Client
	System to Lusangadzi in Mzuzu; and ESIA for Upgrading and Expanding of Jenda Water Supply Schemes by NRW	<p>Jenda Rural Growth Centre, one of the fastest growing market centres under Mbelwa District Council is supplied with water by the Jenda Water Supply Scheme and partially by Champhira Rural Gravity-Fed System which together produces a maximum of 290m<sup>3</sup>/day against the current demand of 1,196m<sup>3</sup>/day and a projected demand of 3,381m<sup>3</sup>/day for a projected population of 25,295 by 2035. The water supply at Jenda faces two major problems namely; the current supply is inadequate to meet the current demand and the supplied water is untreated posing a lot of health risks to the people of Jenda. The proposed works to upgrade and expand the water supply system involved construction of two river intake weirs, installation of two raw water pipelines for a total distance of 11.5 Km with DN 200mm and 350mm of uPVC and DI materials, construction of a treatment plant, three 1000m<sup>3</sup> service tanks, installation of 120 Km distribution pipelines and installation of a 30 Kw solar power supply system at treatment and office building.</p>	<p>the project area to identify potential environmental and social impacts from the project activities and determine appropriate enhancement and mitigation measures;</p> <ul style="list-style-type: none"> <li>• Conducted stakeholder mapping and consultations with relevant key informants i.e., Focus Group Discussions with local chiefs and District Council Offices;</li> <li>• Conducted baseline socio-economic household surveys with project beneficiaries;</li> <li>• Developed an Environmental and Social Management and Monitoring (ESMMP) Plan; and</li> <li>• Prepared a comprehensive ESMP</li> </ul>	



## Matex International Company Profile

No.	Assignment Name	Brief Project Description	Detailed Services Provided	Client
			and ESIA reports.	
17	Development of an Environmental Health and Safety Work Policy for Maone Fuel Service Station	The proposed Maone Fuel Service Station intends to construct and operate a filling station in the city of Blantyre. The facilities at the site will include a 24-hr service station with a tuck shop, banks, tyre fitment centre, kiosk and indoor playground. The scope of the EHS includes construction and operation activities to be implemented for the project will include site clearing, construction of driveway, forecourt, drainage, shop, tyre fitment centre, kiosk, installation of underground fuel tanks, loading and off-loading of fuel during operation phase. The Policy also covers measures in place to be used during times of emergencies and accidents.	<ul style="list-style-type: none"> <li>Developed an Environmental Health and Safety Workplace Policy</li> </ul>	Mr. Mohamed Hanif Osman
18	Training in Occupational Safety and Health, and Provision of Guidelines on the Development of an Occupational Safety and Health Policy for Tilitonse Foundation	Tilitonse Foundation in collaboration with Civil Society Agriculture Network (CISANET) and Welthungerhilfe (WHH) is implementing a project titled Strengthening Food and Nutrition Security Programming in Malawi. The project is funded by German Federal Ministry for Economic Cooperation and Development (BMZ) through Welthungerhilfe. The main objective of this project is to promote the capacity of civil society organisations in Malawi to improve food security and strengthen resilience. Specifically, the project is expected to strengthen capacity of 10 civil society organizations (CSOs) and district-based network associations in evidence based FNS management, administration and programming. This support will in turn enable the targeted CSOs to plan and implement effective and	The overall objective of this assignment was to provide guidance in development of an OSH Policy/Guideline and train the three CSOs in Occupational Safety and Health	Tilitonse Foundation



## Matex International Company Profile

No.	Assignment Name	Brief Project Description	Detailed Services Provided	Client
		<p>participatory Food and Nutrition Security (FNS) programming approaches with their target groups or communities. In July 2022, Tilitonse Foundation in collaboration with Civil Society Agriculture Network (CISANET) and Welthungerhilfe (WHH) conducted a capacity assessment which identified critical gaps in management structure, financial and resource management systems, human resources and programme management. Based on the gaps identified, the assessment further recommended capacity development options that will enable the CSOs to effectively deliver on their mission. One of the gaps identified was that for CSOs do not have Occupational Safety and Health policy. It is against this background that Tilitonse Foundation engaged the services of Matex International to train the three organisations in Occupational Safety and Health and provide guidance on how to develop an OSH Policy.</p>		



## Matex International Company Profile

### 4.0. BRIEF PROFILES OF STAFF

No.	Name	Role	Qualifications	Years of Experience
1	Robert Matengula	Managing Director/De-risking Specialist/Principal Consultant	MSc. Environmental Management  BSc. Education (Geography & Natural Resources Management)  Dip. Social and Development Studies	>15
2	Fabiano Kwaule	Social and Community Development Specialist	MSc. Water and Environmental Management  BSc. Public Administration and Sociology  Post Grad. Dip. Development Communication	>30
3	Hastings Jolotie Nyirenda	Resettlement and GIS Specialist	MSc. Town and Regional Planning  BSc. Architectural Studies	>15
4	Mwai Chingaye	Projects and Safeguards Engineer	BSc. Irrigation Engineering	>6
5	Beracah Ntodwa	Social Development Analyst	BSc. in Applied Economics	>5
6	Miriam Moyo Matengula	Social Development Analyst/Operations & Administration Officer	BSc. Social Work  Dip. Public Relations	>5

# Matex International Company Profile

**Managing Director/De-risking Specialist**  
**More than 15 years of professional experience**



## Robert Matengula

Robert is a Senior Consultant with over 15 years' experience working with Malawi Government, multilateral organizations, private companies and non-governmental organizations on environment, climate change and sustainable development management. Mr. Matengula has performed a number of environmental and social impact assessment consultancies in Malawi. His experience includes preparing climate change mitigation and adaptation strategies for projects funded by Malawi Government and developing partners. He has also been engaged to train rural farmers located in flood prone areas in climate smart agriculture. He has served as an environmental expert for several projects in Malawi and the SADC region, including service as independent environmental for Agricultural Productivity Programme for Southern Africa which comprises Malawi, Mozambique and Zambia. All work was performed to international and local standards.

### Academic Qualifications

**MSc. Environmental Management** from University of Houston Clear-Lake  
**BSc. Education Humanities** from University of Malawi  
**Dip. Social Development Studies** from Volda University College, Volda, Norway  
**Dip. Renewable Energy for Developing Countries** from United Nations Institute for Training and Research (UNITAR)

### Countries of Experience

Malawi, Malaysia, Mozambique, Norway, South Africa, Taiwan, USA

### Languages

- **Chichewa:** Mother tongue
- **English:** Fluent
- **French:** Basic level

### Key Areas of Expertise

- **Environmental and Social Impact Assessments** i.e., Team Lead;
- **Climate change management** i.e., mitigation and adaptation;
- **Environmental and social projects and programs development and management;**
- **Risk reduction, assessment and management;**
- **Project management and coordination; and**
- **Training and capacity building.**





# Matex International Company Profile

**Social and Community Development Specialist**  
**More than 30 years of professional experience**



## **Fabiano Kwaule**

Mr. Kwaule is a Senior Consultant with over 30 years of experience working as a Social and Community Development Specialist with expertise in socio-economic profiling, developing and coordinating stakeholder engagement plans and conduct consultations, data collection tools and leading and managing teams of Research Assistants in data collection for more than 30 ESIA's throughout the country. He is a member of National Community Based Management Core Training Team.

### **Academic Qualifications**

**MSc. Degree in Water and Environmental Management** from Loughborough University  
**BSc. Public Administration and Sociology** from University of Malawi, Chancellor College  
**Post Graduate Diploma in Development Communication** from Indian Institute of Mass Communication

### **Countries of Experience**

Malawi

### **Languages**

- **Chichewa:** Mother tongue
- **English:** Fluent

### **Key Areas of Expertise**

- **Social Impact Assessment;**
- **Stakeholder Engagement Plan and consultations;**
- **Gender mainstreaming; and**
- **Project design and management.**



# Matex International Company Profile

**GIS and Resettlement Specialist**  
**More than 15 years of professional experience**



## Hastings Jolotie Nyirenda



Hastings is an accomplished consultant in land acquisition, GIS, urban planning and architectural services. He has worked in climate change projects, humanitarian response and recovery, development and construction projects. He has worked in projects financed by the World Bank, the African Development Bank, European Investment Bank, UNDP, European Delegation, and many more. He has worked on resettlement projects that include Dar Es Salaam Metropolitan Development Project (DMDP), Shire Valley Transformation Project, Malawi- Mozambique Interconnection Project, Red Cross Flood Recovery Project, Nacala Corridor Railway Line project and Millennium Challenge Account power line project.

### Academic Qualifications

**MSc. Town & Regional Planning** from  
University of Pretoria – South Africa  
**BSc. Architectural Studies** from University of  
Malawi

### Countries of Experience

Kenya, Malawi, Mozambique, Tanzania

### Languages

- **Chichewa:** Mother tongue
- **English:** Fluent
- **Tumbuka:** Fluent

### Key Areas of Expertise

- **Resettlement Action Plans (RAPs);**
- **Data and information management;**
- **CAD i.e., Revit, AutoCAD, ChiefArchitect;**
- **Urban Master Planning;**
- **QGIS;**
- **Project management;** and
- **Environmental and Social Impact Assessment.**



# Matex International Company Profile

**Projects and Safeguards Engineer**  
**More than 5 years of professional experience**



## Mwai Chingaye



Mwai is an Engineer with expertise in the management, assessment and construction supervision of irrigation, water supply and drainage projects, and detailed systems design. As an Engineer, he is responsible for providing thorough analysis of designs, technologies, materials and activities for projects to ensure implementation is conducted in a sustainable manner to minimize adverse impacts to the environment. He has provided technical assistance in the preparation of environmental and social assessments for various private, government and donor funded projects and programmes in different fields including irrigation, water supply, construction, climate change, energy, processing among others.

### Academic Qualifications

**BSc. Irrigation Engineering** from LUANAR

### Countries of Experience

Malawi

### Languages

- **Chichewa:** Mother tongue
- **English:** Fluent

### Key Areas of Expertise

- **Detailed irrigation systems and structural design** for irrigation and drainage projects;
- **Pre-feasibility and feasibility studies** of irrigation and water supply projects;
- **Project Safeguarding;**
- **Environmental and Social Impact Assessment** i.e., technical assistance;
- **Construction supervision** of irrigation and civil engineering development projects;
- **CAD** i.e., AutoCAD, Revit, IRRICAD, CROPWAT; and
- **Technical proposal preparation.**



# Matex International Company Profile

**Social Development Analyst**  
**More than 5 years of professional experience**



## **Beracah Ntodwa**

Beracah is an Economist with experience in development work including socio-economic research, project implementation, data analysis and, monitoring & evaluation for Malawi Government, private companies and non-governmental organizations. Beracah's expertise includes economic, social, research, impact assessments, project support, and data analysis. As a Social Development Analyst, Beracah's areas of focus include developing and implementing collaborative approaches to engage stakeholders in impact assessment process and employing best methodologies and analytical skills for socio-economic impact assessments during the ESIA process.

### **Academic Qualifications**

**BSc. Applied Economics** from LUANAR

### **Countries of Experience**

Malawi

### **Languages**

- **Chichewa:** Mother tongue
- **English:** Fluent

### **Key Areas of Expertise**

- **Research and Data Analysis;**
- **Strategic Planning;**
- **Social Impact Assessment;**
- **Reporting and Data Visualization;**
- **Technical Proficiency (MS Office, SPSS, STATA); and**
- **Stakeholder Engagement.**



# Matex International Company Profile

**Social Development Analyst/Administration Officer**  
**More than 5 years of professional experience**



## Mirriam Moyo Matengula

Mirriam is a Social Consultant with specialization in stakeholder engagement, gender, human rights, transitional justice, conflict prevention, and public relations. She has a particular interest in conducting social risk assessments to inform the clients and local communities, as a way of avoid conflicts during project preparation and implementation.

### Academic Qualifications

**BSc. Social Work** from DMI St. John the Baptist University, Lilongwe Campus  
**Advanced Dip. Public Relations & Personnel Administration, ABMA** from Malawi College of Accountancy

### Countries of Experience

Malawi, USA

### Languages

- **Chichewa:** Mother tongue
- **English:** Fluent

### Key Areas of Expertise

- **Stakeholder engagement and consultations;**
- **Social Impact Assessments;**
- **Data analysis;**
- **Community development and participatory monitoring and evaluation;**
- **Conflict prevention, resolution and management; and**
- **Workplace administration and management.**

