



COMPANY PROFILE

**Plot Number 25/5/55,
P.O. Box 40394,
Kanengo, Lilongwe 4,
☎ +265888851905/+265999855955
🌐 www.matexmw.com
✉ info@matexmw.com**



P.O. Box 40394, Kanengo, Lilongwe. Phone: +265 888 851 905. Email: info@matexmw.com

Table of Contents

1.0. Consultants Organisation and Experience	3
1.1. Consultants Organization	3
1.1.1. Background	3
1.2. Services Provided	4
1.3. Field of Specialization.....	4
1.3.1. Environmental and Social Impact Assessment	4
1.3.2. Natural Resources Management.....	4
1.3.3. Energy and Climate Change.....	5
1.3.4. Technology and Innovation.....	5
1.4. Management Structure	5
1.5. Matex International’s Experience.....	6
2.0. Detailed Overview of Matex International’s Key Projects	10
3.0. Brief Profiles of Staff.....	35



1.0. Consultants Organisation and Experience

1.1. Consultants Organization

1.1.1. Background

Matex International is a private consulting firm, registered under the Business Names Registration Act (Cap. 46:02), and recognized as environmental impact assessment professionals by Malawi Environmental Protection Authority (MEPA). The company is also registered with Public Procurement and Disposal of Asset (PPDA) and Malawi Revenue Authority (MRA). The firm has extensive experience working with and for international organizations.

The firm has experts with relevant experience in **Environmental Management, Engineering, Energy, Water Resource Management, Business Development and Social Development**. The team, provides skills and experience with deep local setting knowledge, and believes that the key to success is to work in close collaboration with clients and surrounding communities to produce tailored, practical, and long-term technical, social, and environmentally sustainable outcomes. Thus, we approach any project holistically, taking into account not only the capital costs of implementation, but also the practicality, ease of maintenance, operational expenses, and any ongoing residual impacts. In addition, the firm has an extensive network with other consulting firms as well as individual consultants working in specialized fields to offer wide range of services.

Some of our esteemed clients of include the Government of Malawi through various Ministries, Departments and Agencies (MDAs), the World Bank, European Union, AfDB, United Nations Office for Project Services (UNOPS), International Fund for Agricultural Development (IFAD), Lilongwe Dairy Limited, Press Corporation Limited (PCL), Financial Access for Rural Markets, Smallholders and Enterprises (FARMSE), Catholic Relief Services (CRS) and OPTICHEM.

Our Strength

A key differentiator for Matex International is our local experience. We understand the complex political, social, economic and financial challenges that Malawi is facing, and we strive to develop solutions which are appropriate to the local context and culture with full participation of local communities.

Our values

Our core values are integrity, hard work, professionalism, inclusiveness and quality assurance. Our commitment to these core values and desire to stay connected to projects, activities, programmes and clients is what distinguishes us from other firms.



1.2. Services Provided

- Environmental and Social Impact Assessments
- Energy and Climate Resilience
- Training and Capacity Building
- Regulatory Permitting and Compliance
- Monitoring and Performance Assessment
- Public Consultations and Stakeholder Engagement
- Resettlement Action Plans
- Feasibility Studies and Project Design
- Socio-economic Baseline Surveys; and
- Project Monitoring and Evaluation.

1.3. Field of Specialization

Matex International has a client-centric business model that gives it the ability to deliver a wide range of its services throughout the nation. We have created the best team for our clients, developed strong client relationship and provide leading solutions on the market. The firm provides multidisciplinary services in the following sectors:

1.3.1. Environmental and Social Impact Assessment

Financiers, governments and investors require reliable assessments of potential project and programme impacts and corresponding feasible and cost-effective mitigation measures for decisions to be made to proceed with projects, programmes and investments. Matex International Ltd through its multidisciplinary team delivers Environmental and Social Impact Assessments, Environmental Audits and related services to help development projects and programmes proceed in an environmentally and socially acceptable manner.

Our safeguards scientists apply cutting-edge analytical skills to conduct biophysical and socioeconomic assessments, stakeholder and public consultations and risk assessments for Environmental Social Impact Assessment and Environmental Audits. Using innovative tools and our extensive experience, we work with our clients to produce results that meet regulatory and financiers' requirements to safeguard lives and the environment.

1.3.2. Natural Resources Management

The Matex International team of interdisciplinary experts comprising of water resource engineers, scientists, and planners are proven leaders in water resources through the development of successful solutions for watershed management, catchment management, flood reduction, water supply, irrigation development and related natural resource issues.



We solve some of the most challenging and complex water and environmental issues using an interdisciplinary approach that engages our team's expertise in civil and hydraulic engineering, hydrology, climate resilience, habitat and forest restoration and biodiversity assessments, waste management and groundwater recharge. We routinely take projects from planning and design, construction and operation and maintenance.

1.3.3. Energy and Climate Change

At Matex International, we strive to work with our clients to integrate analytics and technology to solving energy and climate change induced challenges. Our services help investors and public sector clients to solve most complex energy and climate change problems using technology and engineering solutions from planning and design through implementation.

1.3.4. Technology and Innovation

Environmental and social data management, systems development, geospatial analysis, and visualization are core services at Matex International. Our scientists and engineers strive to collect and process data to improve quality of assessments conducted for our clients.

We assist our clients in developing environmental and social management systems that are informed by quality data collected and processed using innovative tools. We utilize up to date technology and innovations to solve environmental and social problems encountered by projects and investments. Furthermore, we excel at visual representation of site data to facilitate communication of complex concepts and the overall story of a project and programme.

Matex international recognizes the comprehensive nature of projects in the rural development set-up and therefore offers its services through a multi-disciplinary team of environmental experts, community development specialists, engineers, social scientists and economist and analysts with considerable experience in research and development, acquired both locally and abroad.

1.4. Management Structure

Matex International, has a client-centred model as such, we attempt to structure projects around the hands-on involvement of our core experts with local knowledge of the project areas. Experts from the firm, have experience of Malawi and makes them understand the very complex political, social, cultural, economic and financial challenges that Malawi is facing, and we strive to develop solutions which are appropriate and applicable to the local socioeconomic and cultural dynamics with full participation of local communities.

The firm has eight full time consultants with relevant expertise in Environmental Management, Physical Planning, Social Sciences, Engineering, Business social Development and Water Resources Management. The firm engages the services of well skilled and experienced Research



Assistants, from time to time, to assist in data collection, and analysis depending on the nature, size and location of the project. The firm also has fulltime Administrative Personnel to manage the office, type reports, assist in purchasing and issuing supplies and keeping records. A driver is also employed on full time, to assist in taking staff to the various places for field investigations and public consultations, and collection and delivery of office documents. Below is Matex International’s organizational structure:

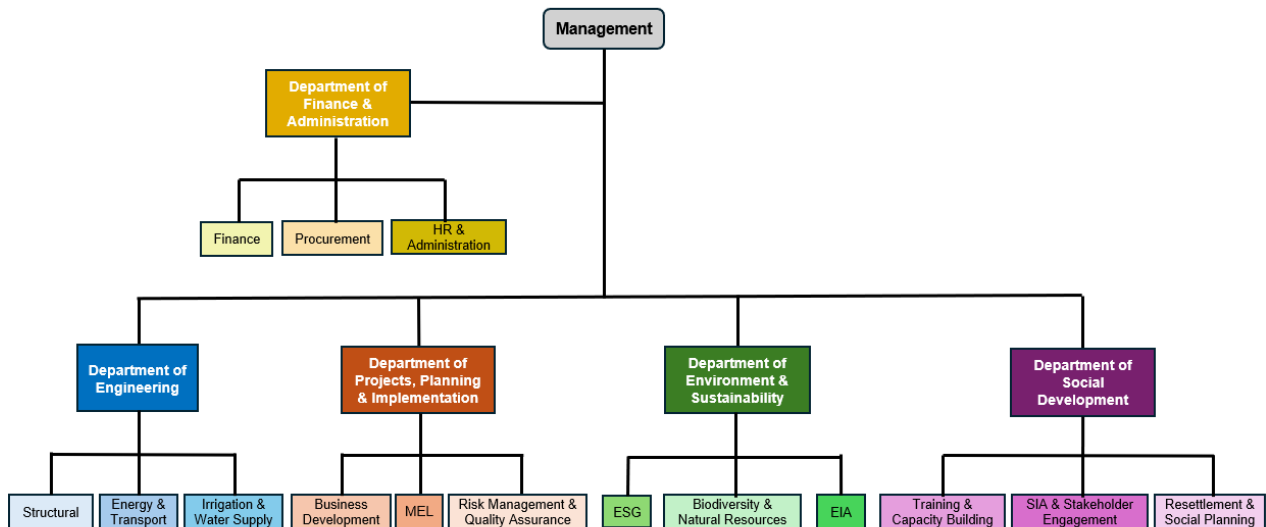


Figure 1 Matex International Organisation Structure

1.5. Matex International’s Experience

Matex International’s experience is built on more than a decade of proven expertise, innovation and commitment to quality. With a strong foundation in delivering reliable solutions across diverse industries, the company has consistently demonstrated its ability to adapt to evolving market needs while maintaining high standards of excellence. Its track record reflects a blend of technical proficiency, strategic partnerships and a customer-centric approach, positioning Matex International as a trusted leader within its field. **Table 1** presents some of the key projects that the firm has conducted.



Table 1 Some of the Key Projects that Matex International has Conducted

Sector	Project	Services Provided
Energy & Transport	Construction of Proposed Electricity Transmission Lines & Substation by Vulcan Logistics and CEAR	ESIA
	Installation and Operation of a 50MW Photovoltaic Solar Plant at Nkhoma in Lilongwe by Press Corporations Limited	ESIA
	Installation and Operation of a 34MW Solar PV/50 MWh Energy Storage System in Zomba by GreenCells Group	ESIA
	Installation and Operation of a 20MW Solar Powered Plant in Monkey Bay, Mangochi	ESIA
	Installation and Operation of Chintheche Solar Power Plant 50 MW in Nkhatabay District	ESIA
	Establishment of a 150-MW Windfarm in Chipumulo – Chikhwengwe	ESIA
	Operation of a 5 million-litre Fuel Storage Facility at Makata in Blantyre city by SIMSO Oil Company	Environmental and Social Audit
Irrigation, Agriculture & Food Security	Development and Operation of Ujiji Irrigation Scheme in Karonga District under the MFSRP	ESIA
	Development and Operation of Lembani Irrigation Scheme in Neno District under the MFSRP	ESIA
	Expansion of Bwanje Valley Irrigation Scheme in Dedza District under the MFSRP	ESIA
	Upgrading of ESIA Reports and ESMPs for Mwenilondo & Dwambazi Irrigation Schemes	ESIA & ESMP
	Development and Operation of a 400-hectare Irrigation Scheme at Mchemela in Dowa District by Mtalimanja Holdings Limited	ESIA
	Preparation of Safeguard Documents for Agricultural Productivity Program for Southern Africa (APPSA)	ESIA & RAP
	Development and Operation of Bimbi Irrigation Scheme in Balaka District	ESIA
	Agriculture Productivity Program for Southern Africa	ESIA & RAP
	Construction of Eleven Irrigation Schemes under Agriculture Infrastructure Support Project	ESIA
	Shire Valley Transformation Programme (SVTP), Phase 1: Detailed Design of Main Canal 2- Bangula Section, Lengwe National Park Section and Secondary Canals in Phase II	ESMP & RAP
	Development and Operation of a Semi-intensive Fish Farm at Mchemela in Dowa District	ESIA
	Environmental and Social Impact Assessment and Land Reorganization Exercise for Mtalimanja Sugar Estates in Nkhotakota District	ESIA
Financial Access for Rural Markets, Smallholders and Enterprise (FARMSE)	ESMF	



Sector	Project	Services Provided
Water Supply & Sanitation	Malawi Water and Sanitation Project – Water Supply Pipe Rehabilitation, Upgrading and District Metered Area Management in Kabula and Soche Zones in Blantyre City by BWB	ESMP
	Sustainable Rural Water and Sanitation Infrastructure for Improved Health and Livelihoods (SRWSIHL) Project in Rumphu, Nkhotakota, Ntcheu, Phalombe and Mulanje by the Ministry of Water and Sanitation	Environmental & Social Audit
	Raising and Rehabilitation of Kamuzu Dam I	ESIA & RAP
	Construction of Two Intake Weirs in Lunyangwa River for Mzuzu City and Ekwendeni Township by the NRWB	ESIA
	Construction of Ekwendeni Water Treatment Plant, Service tanks, Installation of Distribution System in Ekwendeni and Mzuzu, and Installation of Pumping System to Lusangadzi in Mzuzu	ESMP
Processing & Manufacturing	Development and Operation of an Industrial Park at Chigumula in Blantyre District by the MITC	ESIA & RAP
	Installation and Operation of Pharmaceutical Incinerator at Njewa in Lilongwe District by Mitch Pharmacy	ESMP
	Installation and Operation of a Medical Oxygen and Nitrogen Manufacturing Plant by Oxy-Tech Limited	ESMP
	Installation and Operation of a Rice Processing Factory in Karonga District by Kajikhomele Foundation Limited	ESMP
	Installation and Operation of a Rice Processing Factory at Santhe in Kasungu District by Mtalimanja Holdings Limited	ESIA
	Installation and Operation of a Cannabinoids Extraction Plant at Mbabvi in Lilongwe District by MMC Laboratories	ESIA
	Installation and Operation of a Soymilk Extraction Plant at Lilongwe Dairy's main Depot in Area 5 by Lilongwe Dairy	ESIA
	Installation and Operation of a Granular Fertilizer Production Factory at Liwonde in Machinga District by Optichem Limited	ESIA
	Operation of a Dairy Processing Factory at Area 5 in Lilongwe City and Milk Collection Depot at Goliati in Thyolo District by Lilongwe Dairy	Environmental & Social Audit
	Malawi Gold Project – Cultivation and Processing of Medicinal Cannabis under Solar Powered Indoor and Outdoor Irrigation in Lilongwe District by InteGrow Capital Limited	ESIA
Construction & Civil Works	Improving Secondary Education in Malawi (ISEM-II) Project in Dedza, Lilongwe, Chiradzulu and Mulanje Districts under Lot II by the European Union	Environmental & Social Monitoring, OSH & EHS
	Upgrading of Four Technical and Vocational Education and Training (TEVET) Colleges in Blantyre, Lilongwe, Mzuzu & Salima under Zantchito Programme by UNOPS	ESIA & ESMP



Sector	Project	Services Provided
	Renovation for the Malawi UN Women office spaces at Area 10 in Lilongwe City by UNOPS	ESMP
	Construction and Operation of Students' Hostels at Mzuzu University Campus in Mzuzu City	ESIA
	Development & Operation of a Star Commercial Complex along Chileka Road at Kameza in Blantyre City by Star Holdings Limited	ESIA
	Development and Operation of an Events Complex Facility at Area 32 in Lilongwe City by Zainsa Limited	ESMP
	Construction of 180 Safe, Green and Climate Resilient Houses and Restoration of Essential Infrastructure in Zomba and Phalombe Districts by Habitat for Humanity	ESMP
	Development & Operation of a Lifestyle Centre at Mwera Village in Lilongwe District by Zainsa Limited	ESIA
	Operations of a Campsite in Chikwawa District by Conduril	Environmental and Social Audit
	Recommissioning of SIMSO Oil Company Limited Filling Station at Kaporo in Karonga District by SIMSO Oil Company	ESMP
	Development of an Environmental Health and Safety Workplace Policy for Maone Fuel Service Station along Blantyre-Zomba Road in Blantyre City	EHS
	Construction and Operation of Brighto Fuel Station at Liwonde Village in Mwanza District	ESMP
	Construction and Operation of Paphiri Fuel Station in Lumbadzi by Mphasoko Investments	ESMP
Mining	Thawale Quarry Mining Project at Kanyenyeva in Salima District	ESIA
Forestry & Climate Change	Restore Africa (RESAF) – Restoring Landscapes and Livelihoods in Chitipa, Mzimba, Ntcheu, Neno, Mangochi, Machinga and Zomba Districts by Catholic Relief Services (CRS)	ESIA
	Smallholder Farmers' Afforestation Project in Mzimba District by GreenCollar	ESIA
	Afforestation & Reforestation Project for Carbon Credits in Kasungu District by iRise	ESIA
	Socio-Economic Study of Communities Surrounding Liwonde National Park and Mangochi Forest Reserve	Baseline Assessment



2.0. Detailed Overview of Matex International's Key Projects

No	Assignment Name	Brief Project Description	Detailed Services Provided	Client
1	ESMP for the Malawi Water and Sanitation Project-1 (MWSP-1)	<p>To enhance water supply and sanitation service delivery for residents of Blantyre City and its surrounding areas, the GoM, through the BWB and Blantyre City Council (BCC), is implementing the MWSP-1, financed by the World Bank's International Development Association (IDA). The project aims to increase access to safe, reliable and improved water supply and sanitation services across the Blantyre Metropolitan Area, benefiting an estimated population of approximately 1.2 million residents. Furthermore, MWSP-1 seeks to strengthen the operational and financial performance of BWB by rehabilitating and upgrading the water distribution network in the Kabula and Soche Zones, covering a total of 266.18 Km of pipeline. The project will also introduce District Metered Area (DMA) management initiatives to improve water loss control, enhance supply efficiency and ensure sustainable service delivery. The main project activities will include:</p> <ul style="list-style-type: none"> • Rehabilitation and upgrading of distribution pipe network covering a stretch of about 266 Km in 22 townships of the Blantyre City and surrounding areas • Removal and storage of the old pipes, some of which contain asbestos • Coordinated disposal of Asbestos Cement (AC) pipes. 	<ul style="list-style-type: none"> • Conducted a thorough literature review of national environmental, social and sanitation policies, legal frameworks and applicable standards. With focus on the WBG Environmental and Social Framework (ESF) • Reviewed project design specifications, processes, materials, technologies and equipment to be used for the project during implementation. • Carried out detailed field investigations to assess baseline environmental and socio-economic conditions in the project areas, covering geology, soils, hydrology, air quality, noise, land use, demographics, health status, livelihood patterns among other things. • Designed and implemented baseline socio-economic household surveys to capture community dynamics and potential project interactions. • Develop and executed a stakeholder engagement plan by consulting key stakeholders for the project including the Blantyre District Council and surrounding communities 	BWB



No	Assignment Name	Brief Project Description	Detailed Services Provided	Client
			<ul style="list-style-type: none"> • Identified potential environmental and social impacts associated with project works during implementation • Develop mitigation measures to address and manage the potential environmental and social risks and impacts; develop an ESMMP • Preparing a detailed ESMP Report 	
2	Improving Secondary Education in Malawi – Phase II (ISEM-II) Project	<p>The Government of Malawi through the Ministry of Education has received a full grant from the European Union to implement the ISEM II Project, of which one of its components is the expansion and rehabilitation of school infrastructure in selected secondary schools, across the country.</p> <p>The Assignment is for a period of 18 months (October 2025 – December 2026). The assignment involves environmental and social due diligence, and compliance monitoring for the expansion and rehabilitation of secondary school infrastructure across selected districts in Malawi.</p>	<ul style="list-style-type: none"> • Review existing Environmental and Social (E&S) instruments • Monitoring contractor compliance with approved ESMPs and environmental permit conditions • Conducting field inspections to identify and report potential E&S non-compliances • Overseeing the management of construction-related impacts such as noise, dust, waste, and occupational hazards • Evaluating the effectiveness of mitigation and safety measures implemented on-site • Monitor GBV/SEA/SH prevention and response systems • Engaging with local stakeholders and school communities to ensure inclusion, safety, and feedback integration • Assess the functionality of Stakeholder Engagement Plans (SEPs) and Grievance Redress 	Ministry of Education



No	Assignment Name	Brief Project Description	Detailed Services Provided	Client
			<p>Mechanisms (GRMs), reviewing accessibility, inclusiveness, case management, and community feedback processes; and</p> <ul style="list-style-type: none"> • Preparing environmental and social monitoring reports for submission to the Ministry of Education and the EU Delegation. 	
3	ESIAs for the Proposed Railway electrification and Transmission line Project.	<p>The Nacala Logistic Corridor is a vital transportation and trade route that extends from the port city of Nacala in Mozambique through five districts in Malawi—Chikwawa, Mwanza, Balaka, Machinga and Neno. Strategically positioned, the corridor facilitates the efficient movement of goods, including minerals, agricultural produce, and other exports, connecting inland regions to international markets. To support the growing energy needs of railway operations along this corridor, Nacala Logistics plans to develop a new electrical transmission line. As railways increasingly shift towards electrification to improve operational efficiency and reduce dependence on diesel fuel, a stable and sustainable power supply becomes critical. Meeting this demand requires the establishment of robust and well-designed transmission infrastructure. The proposed project entails the construction of a 1,026-Km transmission line from the power generation station in Moatize to Nacala, traversing the five districts in Malawi. Additionally, a substation will be built at Phombeya, designed to supply 100 MW of electricity to the national grid.</p> <p>Nacala Logistics has engaged Matex International as the consultant to conduct an Environmental and Social Impact Assessment (ESIA) for the portion of the transmission line that crosses through Malawi.</p>	<ul style="list-style-type: none"> • Conducted a desk review of relevant national environmental and infrastructure laws, policies, and regulations applicable to the project. • Developed a Stakeholder Engagement and Consultation Plan tailored to the project’s geographical and social context. • Reviewed project designs, technical specifications, and alignment options, and assessed feasible project alternatives. • Undertook field investigations to document existing biophysical and socio-economic baseline conditions along the proposed route. • Held stakeholder consultations with District Councils, MEPA, Traditional Authorities, Area Development Committees • Identified and assessed potential environmental and social impacts for the project. 	Vulcan Logistics Ltd & Central East Africa Railways (CEAR)



No	Assignment Name	Brief Project Description	Detailed Services Provided	Client
		<p>The ESIA's identified and evaluated potential environmental and social impacts arising from the development and operation of both the transmission line and the substation, guiding mitigation strategies and sustainable project implementation.</p>	<ul style="list-style-type: none"> Proposed mitigation and enhancement measures to address identified risks and impacts. Prepared safeguard documents for the two ESIA's. 	
4	Socio-economic study of communities surrounding Liwonde National Park and Mangochi Forest Reserve, Malawi	<p>African Parks assumed management of Liwonde National Park (545km²) in 2015 and were granted a further mandate in 2018 by the government of Malawi for the Mangochi Forest Reserve (358km²). It is estimated that over one million people live within 5 kilometres of the park boundaries and depend on the natural resources for their livelihoods. This population is not homogenous and induces communities who were resettled from other parts of the country. Understanding the characteristics and needs of these diverse groups is important in formulating appropriate engagement and development plans.</p> <p>The desired impact of AP's investment in community development is to build a local support base (or constituency) for conservation that is engaged in the management of protected areas, educated about the importance of conservation, and benefiting from conservation, both directly and indirectly. Socio-economic studies provide demographic, social, and economic profiles for communities around the parks to enable identification of development needs, to establish a baseline for monitoring, and to measure developmental change</p> <p>Matex International conducted a socio-economic study of the communities surrounding Liwonde National Park and Mangochi Forest Reserve. The study used quantitative and</p>	<ul style="list-style-type: none"> Recommend the appropriate sample design - inducing sampling methodology, frame, and adequate sample size. Design study (quantitative survey, interviews, etc.) to address key information needs and to fit target respondents. Design/adapt study tools (survey questionnaire, key interview questions, etc.) Pre-test questionnaires/interview guides/etc. and refine as needed. Train enumerators and field supervisors. Plan the field work logistics. Developed a detailed stakeholder engagement and consultation plan Conducted field investigations to identify the socio-economic conditions of the proposed project area including energy supply, demographic trends, health condition, socioeconomic activities etc. Conducted baseline socio-economic surveys with surrounding community, 	African Parks



No	Assignment Name	Brief Project Description	Detailed Services Provided	Client
		qualitative methods to collect and analyse relevant information.	<p>neighbouring businesses and stakeholders</p> <ul style="list-style-type: none"> • Conducted comprehensive consultations with relevant key stakeholders • Develop a Socio-economic report of the assignment. 	
5	Upgrading ESIA's for the Dwambazi Irrigation Scheme under the Malawi Food Systems Resilience Programme (MFSRP)	<p>The Government of Malawi, with financial support from the World Bank Group (WBG) through the MFSRP-a successor project of Agriculture Commercialization Project (AGCOM), intends to increase commercialization of the agriculture value chains through implementation of medium and long-term resilience building interventions including large scale irrigation. With agriculture dominating economic activity in the rural areas and highly susceptible to climate shocks, Malawi will need to increase its agricultural production substantially and sustainably to feed the growing population which relies heavily on rain fed agriculture. Moreover, the country has a considerable dormant potential for expansion of large-scale irrigated crop production which if properly utilized could shift production from subsistence to commercialization in line with the aspirations of Malawi 2063. Dwambazi irrigation scheme will directly benefit 3,100 smallholder farmers. ESIA's for the irrigation scheme was conducted and reports were developed in 2021 under the Programme for Rural Irrigation Development (PRIDE) with funding from Irrigation Fund for Agriculture Development (IFAD) in compliance with their Social, Environment and Climate Assessment Procedures (SECAP). Since the MFSRP is funded by the WBG and development of the proposed irrigation scheme, as part of the project, has to be in line with WBG ESS requirements. The updated ESIA</p>	<ul style="list-style-type: none"> • Revised the regulatory and policy framework, with focus on the WBG Environmental and Social Framework (ESF) to identify all the gaps between national and World Bank ESF requirements • Revised and updated the methodology for screening, categorization and typology of the two irrigation development projects in accordance with ESF requirements • Updated the baseline to reflect any changes that have taken place since the last ESIA • Updated stakeholder engagement plan by reengaged and consultations surrounding communities • Updated mitigation measures to address and manage the potential environmental and social risks and impacts; developed environmental and social management and monitoring plans for similar impact typologies; and • Prepared safeguard documents for the two irrigation schemes including the 	Ministry of Agriculture



No	Assignment Name	Brief Project Description	Detailed Services Provided	Client
		report identified gaps and how they were addressed in line with the applicable ESSs.	Gender Based Violence Management Plan, Child Safety Management Plan, Code of Conduct and Labour Influx Management Plan	
6	Environmental and Social Management Plan (ESMP) services for the renovation for the Malawi UN Women office spaces in Area 10 Lilongwe,	<p>The UN Women Malawi Office, in collaboration with UNOPS, is undertaking a renovation and expansion project at a newly acquired property in Area 10, Lilongwe. The project involves refurbishing an existing house and integrating containerized office spaces to create a functional, secure, and modern workspace for UN Women. To achieve this, the project will include construction activities such as structural modifications, roofing repairs, interior refurbishments, electrical and plumbing upgrades, and site landscaping. As part of the UN Women House Renovation and Expansion Project.</p> <p>Matex International has been engaged to prepare an Environmental and Social Management Plan (ESMP) to ensure that the project complies with national regulations, international best practices, and environmental sustainability principles. Matex International is a Malawian consulting firm specializing in Environmental services.</p> <p>An ESMP outlines mitigation measures, health and safety guidelines, and stakeholder engagement strategies to minimize potential disruptions to the surrounding community while ensuring that construction activities meet social and environmental responsibility standards.</p>	<ul style="list-style-type: none"> • Desk study/literature review of relevant national legal and policy framework related to the project • Developed a detailed stakeholder engagement and consultation plan • A thorough review and analyzed project designs and specifications, materials, equipment, processes, technologies and machinery to be used and provide a thorough analysis of project alternatives • Conducted field investigations to identify the existing bio-physical and socio-economic conditions of the proposed project area including geology, soil, site topography, water resources, drainage systems, temperature and rainfall patterns, energy supply, demographic trends, health condition, socioeconomic activities etc. • Conducted baseline socio-economic surveys with surrounding community and neighbouring businesses • Conducted comprehensive consultations with relevant key stakeholders i.e., client, government MDAs i.e., Ministry of Labour, City 	United Nations Office for Project Services (UNOPS)



No	Assignment Name	Brief Project Description	Detailed Services Provided	Client
			Council, regulatory entities i.e., MEPA, local	
7	ESIA for the Construction and operation of the Mulalo Fertilizer Production Plant in Dowa	Mtalimanja Holdings Limited (MHL) intends to establish a granular fertilizer production plant in Dowa District. This groundbreaking industrial project is poised to make a significant impact on Malawi's agricultural sector, with a production capacity of over 30 tonnes of fertilizer per hour. Reducing reliance on imports, enhance food security, and create over 150 jobs, with a strong commitment to gender inclusion—targeting 40% female workforce participation.	<ul style="list-style-type: none"> • Conducted a comprehensive desk review of national environmental and industrial development policies, legal frameworks, and applicable standards. • Reviewed project design specifications, production processes, materials, technologies, and equipment, including analysis of feasible alternatives. • Carried out detailed field investigations to assess baseline environmental and socio-economic conditions in the project area—covering geology, soils, hydrology, air quality, noise, land use, demographics, health status, and livelihood patterns. • Designed and implemented baseline socio-economic household surveys to capture community dynamics and potential project interactions. • Developed and executed a stakeholder engagement plan involving consultations with local communities, regulatory bodies (e.g., MEPA), district councils, industry regulators, traditional leaders, and other affected parties. • Identified potential environmental and social risks and impacts associated with the construction and operation phases of the fertilizer plant. 	Mtalimanja Holdings Ltd



No	Assignment Name	Brief Project Description	Detailed Services Provided	Client
			<ul style="list-style-type: none"> Proposed mitigation and enhancement measures to address identified impacts, aligned with national guidelines and international best practices. Prepared Environmental and Social Impact Assessment (ESIA) and Environmental and Social Management Plan (ESMP) reports. 	
8	ESIA for the development and operation of the Ujiji Irrigation scheme.	<p>Matex International was engaged to conduct an Environmental and Social Impact Assessment (ESIA) for the Ujiji Solar-Powered Irrigation Scheme in Karonga District. The project is a transformative initiative led by the Ujiji Rice Production and Marketing Club, a cooperative of 568 smallholder farmers, with funding support from the Agricultural Commercialisation Project (AGCOM). The ESIA involved an evaluation of potential environmental and social impacts across all phases of project development.</p> <p>The project will convert 200.3 hectares of land from rainfed to irrigated agriculture using a solar-powered system. The system includes four GRUNDFOS vertical multistage centrifugal pumps, driven by 124 high-efficiency monocrystalline solar panels. Water will be drawn sustainably from Lake Malawi and distributed through an optimized piping network designed to reduce water loss and improve farm-level efficiency.</p>	<ul style="list-style-type: none"> Conducted a comprehensive desk review of national environmental and industrial development policies, legal frameworks, and applicable standards Prepare the methodology for screening, categorization and typology of the two irrigation development projects in accordance with ESF requirements Updated the baseline to reflect any changes that have taken place since the last ESIA Develop and executed a stakeholder engagement plan by engaging and consulting surrounding communities Develop mitigation measures to address and manage the potential environmental and social risks and impacts; developed environmental and social management and monitoring plans for similar impact typologies; and Prepared safeguard documents for the two irrigation schemes including the Gender Based Violence Management Plan, Child Safety Management Plan, 	Ministry of Agriculture



No	Assignment Name	Brief Project Description	Detailed Services Provided	Client
			Code of Conduct and Labour Influx Management Plan	
9	Upgrading of Four Technical and Vocational Education and Training (TEVET) Colleges in Malawi Under Zantchito Programme	The Government of Malawi has observed that improving skills development through appropriate technical, entrepreneurial, and vocational programming and policy support is one major option that will guarantee an increased number of skilled persons to enhance national employment and competitiveness. In this context, Zantchito, a Skills for Job Programme, whose objective is to facilitate skills development improvement through TEVET as a component of enhancing national employment and competitiveness, came on board to support the strengthening and practical implementation of Malawi's (TEVET) policy through a set of effective system appraisals and piloting of sectoral skills development within crucial sectors of the economy such as agriculture, energy, construction, and tourism. By focusing on improving access to vocational skills for young people, the project aligns directly with the goal of achieving inclusive and high-quality education for everyone. UNOPS, with its experience in implementing infrastructure projects, has been approached to support the programme in the following categories: providing new buildings for training centres, supplying and installing quality equipment, and developing a maintenance program in four TEVET institutions namely: Mzuzu Technical, Salima Technical, Lilongwe Technical and Malawi Institute of Tourism. Matex International has been hired to conduct an ESIA for Salima Technical and ESMPs for the other three institutions.	<ul style="list-style-type: none"> • Desk study/literature review of relevant national legal and policy framework related to the project • Developed a detailed stakeholder engagement and consultation plan • A thorough review and analyzed project designs and specifications, materials, equipment, processes, technologies and machinery to be used and provide a thorough analysis of project alternatives • Conducted field investigations to identify the existing bio-physical and socio-economic conditions of the proposed project area including geology, soil, site topography, water resources, drainage systems, temperature and rainfall patterns, energy supply, demographic trends, health condition, socioeconomic activities etc. • Conducted baseline socio-economic household surveys with surrounding communities • Conducted comprehensive consultations with relevant key stakeholders i.e., client, government MDAs i.e., Ministry of Labour, TEVETA, NCIC, Blantyre, Lilongwe and Mzuzu City Council, Salima 	UNOPS



No	Assignment Name	Brief Project Description	Detailed Services Provided	Client
			District Council, regulatory entities i.e., MEPA, PAPs, local	
10	ESIA for the development and Operation of AGCOM's Lembani and Bwanje Irrigation scheme	<p>The Government of Malawi, with financial support from the World Bank Group (WBG) through the Agriculture Commercialization Project (AGCOM), intends to increase commercialization of the agriculture value chains through implementation of medium and long-term resilience building interventions including large scale irrigation. With agriculture dominating economic activity in the rural areas and highly susceptible to climate shocks, Malawi will need to increase its agricultural production substantially and sustainably to feed the growing population which relies heavily on rain fed agriculture. Moreover, the country has a considerable dormant potential for expansion of large-scale irrigated crop production which if properly utilized could shift production from subsistence to commercialization in line with the aspirations of Malawi 2063.</p> <p>AGCOM hired Matex international to develop ESIA reports for the installation and operation of the Lembani and Bwanje irrigation scheme.</p>	<ul style="list-style-type: none"> • Conducted a comprehensive desk review of national environmental and industrial development policies, legal frameworks, and applicable standards. With focus on the WBG Environmental and Social Framework (ESF) to identify all the gaps between national and World Bank ESF requirements • Prepare the methodology for screening, categorization and typology of the two irrigation development projects in accordance with ESF requirements • Updated the baseline to reflect any changes that have taken place since the last ESIA • Develop and executed a stakeholder engagement plan by engaging and consulting surrounding communities • Develop mitigation measures to address and manage the potential environmental and social risks and impacts; developed environmental and social management and monitoring plans for similar impact typologies; and • Prepared safeguard documents for the two irrigation schemes including the Gender Based Violence Management Plan, Child Safety Management Plan, 	Ministry of Agriculture



No	Assignment Name	Brief Project Description	Detailed Services Provided	Client
			Code of Conduct and Labour Influx Management Plan	
11	ESIA for the RESAF Project	Global Evergreening Alliance (GEA) is implementing the RESAF Project in Malawi, an afforestation and reforestation (carbon sequestration) project aimed at sustainably restoring degraded lands, improve sustainability, profitability and reliability of smallholder farming systems. The project will restore 350,000 hectares of degraded land by planting and regenerating 15.5 million trees targeting to benefit 380,000 households across 7 districts (Chitipa, Mzimba, Ntcheu, Neno, Mangochi, Machinga and Zomba) to sequester 11.35 million tonnes of carbon dioxide equivalent (tCO ₂ e) and generate 8.5 million Verified Carbon Units (VCUs) over a 30-year crediting period. The project will be implemented by 8 consortium partners led by CRS as a consortium lead implementing partner (IP), Self Help Africa (SHA) implementing in Chitipa, Total Land Care (TLC) implementing in Mzimba, World Vision implementing in Ntcheu, CADECOM implementing in Neno, CARE International implementing in Mangochi, OSSEDI implementing in Zomba and Machinga Districts, and Centre for International Forestry Research and World Agroforestry (CIFOR ICRAF) as technical partner in the consortium	<ul style="list-style-type: none"> Reviewed relevant documentation including environmental legislation and framework, project documents (RESAF Project Brief Note, RESAF Malawi Socioeconomic Baseline Study and RESAF Malawi Implementation Strategy), IFC Performance Standards Guidance on Environmental and Social Sustainability, Gold Standards for Carbon Project Certification and International and Multilateral Environmental Agreements, Conventions and Treaties Developed a Stakeholder Engagement Plan Conducted site assessments in the project areas to identify potential risks and impacts of the project activities and proposed cost-effective and sustainable mitigation measures Developed an ESMP and monitoring plan for the identified mitigation measures Conducted comprehensive stakeholder consultations with the Financier, IPs, Department of Forestry, Department of Land Resource Conservation, Ministry of Labour, MEPA, District Councils, ADCs, VDCs and households; and 	CRS



No	Assignment Name	Brief Project Description	Detailed Services Provided	Client
12	ESIA for the Installation and Operation of a 50MW Photovoltaic Solar Plant at Nkhoma, Lilongwe	Press Corporation intends to install a 50 Megawatt (MW) solar photovoltaic power generation plant at Nkhoma, in Lilongwe District. The company secured an approval from the Electricity Supply Corporation of Malawi (ESCOM), to connect to the 132KV busbar at its Nkhoma substation after the implementation of the Malawi-Mozambique 400 KV transmission interconnection project. The project will take about 10 months to construct and is expected to commence in March 2024. It is expected that the project will employ 10 people during planning phase 240 workers during construction phase and 14 workers during operation phase	<ul style="list-style-type: none"> • Prepared an ESIA report for the project. • Conducted desk study/literature review of i.e., review of national legal and policy framework relevant for the project • Identification of the existing bio-physical and socio-economic conditions of the proposed project area in terms of geology, soil, site topography, drainage systems, temperature and rainfall patterns etc.; • Public engagement, stakeholder mapping and consultations with relevant key informants i.e., Focus Group Discussions with local chiefs, mother groups, VDCs and Lilongwe District Council; • Conducted baseline socio-economic surveys with surrounding communities • Review of national legal and policy framework relevant for the project • Review of project documents for the proposed project designs and provide a thorough analysis of project alternatives • Field investigations to identify potential environmental and social impacts from project activities • Determination of appropriate enhancement and mitigation measures 	Press Corporation Limited



No	Assignment Name	Brief Project Description	Detailed Services Provided	Client
			<ul style="list-style-type: none"> • Development of an Environmental and Social Management and Monitoring Plan; and • Prepared Environmental and Social Impact Assessment Report. 	
13	Developing of an ESIA and RAP for an Industrial Park in Chigumula	Malawi Investment and Trade Centre (MITC) is developing an industrial park in Chigumula, Blantyre District to promote and facilitate trade and investment through creation of industrial Special Economic Zones in support of the Malawi Vision 2063 and the National Export Strategy. Development of the Chigumula Industrial Park will see increase the earnings and volume of value-added products from agro-processing products. To ensure that development of the industrial park is undertaken in an environmentally and socially acceptable manner, MITC has engaged Matex International Ltd to conduct an Environmental and Social Impact Assessment (ESIA) for the industrial park and Abbreviated Resettlement Action Plan (ARAP) for access road.	<ul style="list-style-type: none"> • Undertook field investigations on current land administration and allocation • Identification of the existing physical and socio-economic conditions of the proposed area in terms of geology, soil, site topography, drainage systems, temperature and rainfall patterns • Public consultations and stakeholder engagements, • Review of national legal and Policy framework relevant for the project, • Identification of the environmental and social impacts, • Determination of appropriate mitigation measures, • Development of an Environmental and Social Impact Assessment Report • Development of an Environmental Management Plan and an Environmental Monitoring Plan • Prepared Abbreviated Resettlement Action Plan for the estates 	Malawi Investment and Trade Centre (MITC)
14	ESIA for the Installation and Operation of a 34MW Solar PV/50 MWh Energy Storage System in Zomba	GreenCells Group Holdings, a successful EPC and independent power producer, intends to install a 34-megawatt (MW) hybrid solar photovoltaic power generation facility with 50 megawatt-hour (MWh) energy storage battery on a	<ul style="list-style-type: none"> • Conducted desk study/literature review of i.e., review of national legal and policy framework relevant for the project 	GreenCells Group Holdings



No	Assignment Name	Brief Project Description	Detailed Services Provided	Client
		<p>private estate (Mpalanganga Estate) at Changalume Turn Off in Zomba District to be located at Mpalanganga Estate and south-west of the Changalume ESCOM sub-station. Electricity demand is estimated to be more than 700 MW (Malawi Government, 2018). However, the installed capacity for electricity generation is much less than the required electricity. Out of the MW generated in the country, 99% is cascaded along the Shire River. Based on the failure of installed capacities to guarantee energy security for Malawi, the national government developed an Independent Power Producer (IPP) Framework. In line with this Framework and inadequate power generation, GreenCells intended to develop and operate the hybrid solar power generation facility that will feed into the nearby sub-station and subsequently be distributed through the national grid system by ESCOM.</p>	<ul style="list-style-type: none"> • Identification of the existing bio-physical and socio-economic conditions of the proposed project area in terms of geology, soil, site topography, drainage systems, temperature and rainfall patterns etc. • Public engagement, stakeholder mapping and consultations with relevant key informants i.e., Focus Group Discussions with local chiefs and Zomba District Council • Conducted baseline socio-economic surveys with surrounding communities • Review of national legal and policy framework relevant for the project • Review of project documents for the proposed project designs and provide a thorough analysis of project alternatives • Field investigations to identify potential environmental and social impacts from project activities • Determination of appropriate enhancement and mitigation measures • Development of an Environmental and Social Management and Monitoring Plan; and • Prepared Environmental and Social Impact Assessment Report. 	
15	ESIA for the Installation and Operation of a 20 MW	Droege Energy plans to establish a 20-megawatt solar powered plant in Monkey Bay. The proposed project involves the construction and operation of a 20 MWp Monkey Bay	<ul style="list-style-type: none"> • Field investigations including site assessments, stakeholder mapping and 	Droege Energy



No	Assignment Name	Brief Project Description	Detailed Services Provided	Client
	Solar Powered Plant in Monkey Bay, Mangochi	Solar Plant (“the Project”) and 2 MWh of Lithium-Ion Battery Storage. The solar technology selected for solar panels are built on photovoltaic monocrystalline cells. This type of panel has been in industry for more time than the Polycrystalline. Both types come from crystalline silicon, but monocrystalline panels have the highest efficiency rates. The generated electricity, about 33.68 GWh/year, will be fed into the existing grid network of Malawi. The construction phase will involve installation of 370 Wp Monocrystalline Panels, and 3 MVA inverters. The project will be deployed in floatable structures that will create a 20-ha island near the shore of the Lake Malawi.	<p>consultations and public consultative meetings</p> <ul style="list-style-type: none"> • Identification of the existing physical and socio-economic environment of the proposed area in terms of geology, soil, site topography, water resources, vegetation, temperature and rainfall patterns • Conducted baseline household socio-economic surveys • Review of national legal and policy framework relevant to the project • Identification, assessment and evaluation of potential adverse impacts of the proposed project • Determination of appropriate mitigation and enhancement measures • Development of an Environmental Management and Monitoring Plan; and • Prepared final Environmental and Social Impact Assessment Report 	
16	ESIA for the Installation and Operation of Chintheche Solar Power Plant 50 MW in Nkhatabay District	Droege Energy plans to establish a 25-megawatt solar powered plant in Chintheche Nkhata Bay. The proposed project involves the construction and operation of a 20 MWp Monkey Bay Solar Plant (“the Project”) and 2 MWh of Lithium-Ion Battery Storage. The solar technology selected for solar panels are built on photovoltaic monocrystalline cells. This type of panel has been in industry for more time than the Polycrystalline. Both types come from crystalline silicon, but monocrystalline panels have the highest efficiency rates. The generated electricity, about 33.68 GWh/year, will be fed into the existing grid network of Malawi. The construction	<ul style="list-style-type: none"> • Field investigations including site assessments, stakeholder mapping and consultations and public consultative meetings • Identification of the existing physical and socio-economic environment of the proposed area in terms of geology, soil, site topography, water resources, vegetation, temperature and rainfall patterns 	Droege Energy



No	Assignment Name	Brief Project Description	Detailed Services Provided	Client
		phase will involve installation of 370 Wp Monocrystalline Panels, and 3 MVA inverters.	<ul style="list-style-type: none"> • Conducted baseline household socio-economic surveys • Review of national legal and policy framework relevant to the project; • Identification, assessment and evaluation of potential adverse impacts of the proposed project; • Determination of appropriate mitigation and enhancement measures; • Development of an Environmental Management and Monitoring Plan; and • Prepared final Environmental and Social Impact Assessment Report 	
17	ESIA for the Establishment of a 150-MW Windfarm in Chipumulo – Chikhwengwe	The proposed project involves the construction and operation of a 150 MW electricity generation plant making use of wind turbines. The generated electricity, about 169.13 GWh, will be fed into the existing grid network of Malawi. The construction phase will involve erection of 60 wind turbines of 2.5 MW each on 100 m high self-supported monopoles. Subject to the final micro-siting, since the wind at the project site is predominantly from the southeast, the wind turbines would be installed in a linear layout: 6 rows of 10 wind turbines each; the wind turbines separated up to 500 m with rows and up to 600 m between rows	<ul style="list-style-type: none"> • Field investigations including site assessments, stakeholder mapping and consultations and public consultative meetings; • Identification of the existing physical and socio-economic environment of the proposed area in terms of geology, soil, site topography, water resources, vegetation, temperature and rainfall patterns; • Conducted baseline household socio-economic surveys; • Review of national legal and policy framework relevant to the project; • Identification, assessment and evaluation of potential adverse impacts of the proposed project; • Determination of appropriate mitigation and enhancement measures; 	



No	Assignment Name	Brief Project Description	Detailed Services Provided	Client
			<ul style="list-style-type: none"> • Development of an Environmental Management and Monitoring Plan; and • Prepared final Environmental and Social Impact Assessment Report 	
18	Environmental and Social Management Framework for the Financial Access for Rural Markets, Smallholders and Enterprises (FARMSE)	<p>The Government of Malawi through the Ministry of Finance with financial support from International Fund for Agricultural Development (IFAD) is implementing FARMSE, a seven-year programme. The overall programme goal is to reduce poverty, improve livelihoods and enhance the resilience of rural households on a sustainable basis. The Programme's development objective is to increase access to, and use of, a range of sustainable financial services by rural households and micro, small, and medium enterprises (MSMEs). The programme targets to support approximately 432,774, of which, an estimated 45% will be women, and at least 20% will be youth and the programme will be implemented nation-wide.</p> <p>The programme has three components:</p> <ul style="list-style-type: none"> ▪ Component 1 – Ultra-Poor graduation and scaling up, which is supporting on-going government efforts in developing and delivering effective graduation programmes in rural areas to reduce extreme poverty levels among both ultra-poor labour constrained and non-labour constrained households ▪ Component 2 – Support to Financial Innovation and Outreach, which seeks to overcome numerous barriers to financial services to the rural poor by supporting the development of informal and formal financial services best suited to ultra-poor non-labour constrained, poor but food secure, vulnerable to poverty, and low income but resilient to poverty 	<ul style="list-style-type: none"> • Conducted a systematic review of national, regional, and international laws, policies, and regulations relevant to FARMSE project taking into consideration new laws that have been enacted in Malawi; • A systematic and clear methodology for screening programme sub-project activities for environmental and social consideration; • Procedures for predicting and assessing potential positive and negative impacts and proposed appropriate enhancement and mitigation measures; • A generic environmental and social management plan for addressing negative impacts during implementation of sub-project activities; • Capacity, training, and technical assistance needs to implement the requirements of the ESMF • Monitoring and evaluation system with appropriate roles and responsibilities of government departments and lead agencies, and outline the necessary reporting procedures for implementation of mitigation measures 	Ministry of Finance



No	Assignment Name	Brief Project Description	Detailed Services Provided	Client
		<p>households with an emphasis on savings and credit for on and off farm enterprise; and</p> <ul style="list-style-type: none"> ▪ Component 3 – Strategic Partnerships, Knowledge Generation and Policy, is aimed at increasing the capacity and knowledge bases of rural financial sector support organizations. 	<ul style="list-style-type: none"> • Conducted socio-economic household surveys with project beneficiaries; and • Recommended capacity building measures for environmental and social planning and monitoring of the sub-project activities. 	
19	Environmental and Social Compliance Audit for the Sustainable Rural Water and Sanitation Infrastructure for Improved Health and Livelihoods (SRWSIHL) Project	<p>The Government of Malawi through the Ministry of Water and Sanitation, with financial support from the African Development Bank (AfDB), implemented the SRWSIHL Project in five districts, namely: Rumphi, Nkhotakota, Ntcheu, Mangochi and Phalombe. The overall goal of the project was to improve health and livelihoods of the marginalized rural population growth through provision of sustainable water supply and improved sanitation by constructing of sanitary facilities in schools, market centres and health centres and drilling of boreholes. The main objective of the consultancy was to assess compliance of the project with AfDB’s Environmental and Social Safeguard policies as well as Malawi Government environmental management laws</p>	<ul style="list-style-type: none"> • Reviewed relevant environmental legislation and framework related to the project including Malawi’s Environment Management Act, National Construction Industry Act and AfDB’s Environmental and Social Safeguards • Conducted inspection for 12 gravity-fed water supply schemes’ newly constructed and rehabilitated infrastructure i.e., reinforced concrete storage and sedimentation tanks, communal water points, Water Users’ Association (WUA) office blocks, transmission pipelines, intake structures (weirs), and public sanitation facilities for schools, markets and health centres in the five districts • Conducted socio-economic and biophysical assessments to identify environmental and social changes that occurred due to activities in the project areas • Conducted stakeholder mapping and consultations with project beneficiaries, Project Implementing 	Ministry of Water and Sanitation



No	Assignment Name	Brief Project Description	Detailed Services Provided	Client
			Unit (PIU) and relevant District Councils <ul style="list-style-type: none"> • Identified compliances and non-compliance of the project and developed a corrective action plan; and • Prepared a comprehensive environmental and social compliance audit report. 	
20	ESIA for the development and operation of a 400-hectare irrigation scheme at Mchemela in Dowa and agro-processing factories at Santhe in Kasungu District	Mtalimanja Holdings Limited (MHL) intends to develop a 400-hectare irrigation scheme at Santhe in Kasungu and Chakhadza in Dowa for purposes of growing rice, ground nuts and maize, and establishment of agro-processing factories for value addition. The project will involve, the development of the irrigation scheme, installation of rice processing factory, peanut butter production factory and maize flower milling factory. The crops to be grown at the irrigation scheme will mainly be rice, maize and groundnuts. The main activities during operation and maintenance phase of the factories will involve dry processing of the agricultural produce for value addition. The proposed site for the agro-processing factories and warehousing is 20 hectares and will be located at Santhe Trading Centre. The broad objective of the project, is to contribute to poverty reduction by enhancing agricultural productivity in the area, increase income levels to the direct and indirect project beneficiaries, increased food security among beneficiaries of these two districts and beyond targeting 3,000 beneficiaries for the next five years	<ul style="list-style-type: none"> • Undertook field investigations on current land administration and allocation and assessed how the current practices will be impacted by the reorganisation of farmers to get their customary land secured under the new Lands Act and Lands (Acquisition) Act; • Identification of the existing bio-physical and socio-economic conditions of the proposed project area in terms of geology, soil, site topography, drainage systems, temperature and rainfall patterns etc. • Public engagement, stakeholder mapping and consultations with relevant key informants i.e., Focus Group Discussions with local chiefs and District Councils • Conducted baseline socio-economic surveys with project beneficiaries • Reviewed national legal and policy framework relevant for the project 	Mtalimanja Holdings Limited



No	Assignment Name	Brief Project Description	Detailed Services Provided	Client
			<ul style="list-style-type: none"> • Reviewed project documents for the proposed irrigation system and factories designs and provide a thorough analysis of project alternatives • Field investigations to identify potential environmental and social impacts from project activities of the irrigation scheme and agro-processing factories • Determination of appropriate enhancement and mitigation measures • Developed Environmental and Social Management and Monitoring Plan; and • Prepared Environmental and Social Impact Assessment Report. 	
21	Environmental and Social Impact Assessment for the installation and operation of a Cannabinoid Extraction Plant	Malawi Medicinal Cannabis Limited (MMC Limited) with shareholding from Mbabzi Estate and MMC Laboratories from United Kingdom intends to develop cannabinoids extraction plant at Mbabzi Estates in Sub Traditional Authority Njewa, Lilongwe to process 48 tonnes of cannabis biomass annually to produce Active Pharmaceutical Ingredient (API) products for the global pharmaceutical industry. MMC Limited appointed Matex International to conduct Environmental and Social Impact Assessment (ESIA) for the proposed project.	<ul style="list-style-type: none"> • Field investigations including site assessments, stakeholder mapping and consultations and public consultative meetings • Identification of the existing physical and socio- economic environment of the proposed area in terms of geology, soil, site topography, water resources, vegetation, temperature and rainfall patterns • Conducted baseline household socio-economic surveys • Review of national legal and policy framework relevant to the project 	MMC Laboratories



No	Assignment Name	Brief Project Description	Detailed Services Provided	Client
			<ul style="list-style-type: none"> • Identification, assessment and evaluation of potential adverse impacts of the proposed project • Determination of appropriate mitigation and enhancement measures • Development of an Environmental Management and Monitoring Plan; and • Prepared final Environmental and Social Impact Assessment Report. 	
22	ESIA for the Installation and Operation of a Soymilk Extraction Plant	LDL intends to install and operate a soy extraction plant within Lilongwe Dairy (2001) Limited premises in Area 5 Industrial Area, Lilongwe City. Lilongwe Dairy (2001) Limited (LDL) is the largest dairy processor in Malawi. It produces various milk and milk products such as Ultra High Temperature (UHT) milk, yogurt, dairy juice blends, butter, cheese, and creams. LDL has over 60% of the raw milk market share and over 70% of the processed milk market share. To further expand their product range and output, LDL plans to install a wholesome soya milk extraction plant adjacent to their existing plant. The extraction plant will process whole soybeans to increase the fibre and protein content of soya milk products, which is beneficial to consumers whilst eliminating waste with a total capacity of 4,000 kg of soya milk per hour	<ul style="list-style-type: none"> • Field investigations including site assessments, stakeholder mapping and consultations and public consultative meetings • Identification of the existing physical and socio- economic environment of the proposed area in terms of geology, soil, site topography, water resources, vegetation, temperature and rainfall patterns • Review of national legal and policy framework relevant to the project • Identification, assessment and evaluation of potential adverse impacts of the proposed project • Determination of appropriate mitigation and enhancement measures • Development of an Environmental Management and Monitoring Plan; and • Prepared final Environmental and Social Impact Assessment Report. 	Lilongwe Dairy (2001) Limited
23	ESIA for the Development and Operation of Mulalo	Mtalimanja Holdings Limited (MHL) intends to establish semi-intensive fish farm at Mchemela in Dowa District. The	<ul style="list-style-type: none"> • Conducted a thorough review and analysis of project designs and 	



No	Assignment Name	Brief Project Description	Detailed Services Provided	Client
	Semi-intensive Fish Farm at Mchemela in Dowa District	proposed fish farm will be developed on a 40-acre land, a portion under Santhe Irrigation Scheme which is currently under rice production. The fish farm will have an annual fish production capacity of 1,000 tons for domestic, regional and international markets. The total project cost for the project is estimated to be MKW650,000,000 and will create 60 direct employment opportunities where 50% of the total workforce will be women.	<p>specifications and other project documents</p> <ul style="list-style-type: none"> • Conducted desk study and literature review of relevant legal and policy framework and safeguards • Field investigations of the biophysical and socio-economic environment of the project area • Conducted baseline socio-economic household surveys with project beneficiaries and PAPs • Conduct stakeholder mapping and consultations with relevant stakeholders including the District Council, VDCs and other mother groups in the project area • Identified potential environmental and social impacts that may occur during implementation of the proposed project activities, and propose mitigation/enhancement measures • Developed an Environmental and Social Management Plan (ESMP); and • Prepared a comprehensive ESIA report. 	
24	Installation and Operation of a Medical Oxygen and Nitrogen Manufacturing Plant by Oxytech Limited	Oxytech Limited, a subsidiary of Santa Plaza Group Limited, intends to install and operate a medical manufacturing plant for oxygen and nitrogen and supply the gas for medical use in Malawi's hospitals, health centres and various institutions. This initiative aims at providing support and assistance to the government in the health sector which is facing challenges in supply of medical oxygen and nitrogen due to the rapid growth in demand in recent years. The client will be	<ul style="list-style-type: none"> • Field investigations including site assessments, stakeholder mapping and consultations and public consultative meetings • Identification of the existing physical and socio- economic environment of the proposed area in terms of geology, soil, site topography, water resources, 	



No	Assignment Name	Brief Project Description	Detailed Services Provided	Client
		distributing and supplying the oxygen to certified wholesalers and retailers across all cities in the country.	vegetation, temperature and rainfall patterns <ul style="list-style-type: none"> • Review of national legal and policy framework relevant to the project • Review of national legal and policy framework relevant to the project • Identification, assessment and evaluation of potential adverse impacts of the proposed project • Determination of appropriate mitigation and enhancement measures • Development of an Environmental Management and Monitoring Plan; and • Prepared a comprehensive ESMP Report. 	
25	ESMP for the Construction of Ekwendeni Water Treatment Plant, Service tanks, Installation of Distribution System in Ekwendeni and Mzuzu, and Installation of Pumping System to Lusangadzi in Mzuzu; and ESIA for Upgrading and Expanding of Jenda Water Supply Schemes by NRW	<p>The NRW, as a parastatal organization of the Government of Malawi, is mandated to provide potable water supply and waterborne sanitation services to the urban centres of the Northern Region of Malawi. Due to the ever-growing water demand in Mzuzu city and Ekwendeni township, the NRW implemented the Malawi Water Efficiency Project with funding from the European Investment Bank (EIB). The main goal of the project was to increase potable water supply for Mzuzu city and Ekwendeni township. The project involved construction of Ekwendeni Water Treatment Plant, rehabilitation and construction of new service and reservoir tanks, installation of a pumping and pipeline distribution system.</p> <p>Jenda Rural Growth Centre, one of the fastest growing market centres under Mbelwa District Council is supplied with water by the Jenda Water Supply Scheme and partially by</p>	<ul style="list-style-type: none"> • The main assignment tasks involved were reviewing of national legal and policy framework, project designs and specifications and providing a thorough analysis of project alternatives • Field investigations to identify the existing bio-physical and socio-economic conditions of the project area to identify potential environmental and social impacts from the project activities and determine appropriate enhancement and mitigation measures • Conducted stakeholder mapping and consultations with relevant key informants i.e., Focus Group Discussions with local chiefs and District Council Offices 	NRWB



No	Assignment Name	Brief Project Description	Detailed Services Provided	Client
		Champhira Rural Gravity-Fed System which together produces a maximum of 290m ³ /day against the current demand of 1,196m ³ /day and a projected demand of 3,381m ³ /day for a projected population of 25,295 by 2035. The water supply at Jenda faces two major problems namely, the current supply is inadequate to meet the current demand, and the supplied water is untreated posing a lot of health risks to the people of Jenda. The proposed works to upgrade and expand the water supply system involved construction of two river intake weirs, installation of two raw water pipelines for a total distance of 11.5 Km with DN 200mm and 350mm of uPVC and DI materials, construction of a treatment plant, three 1000m ³ service tanks, installation of 120 Km distribution pipelines and installation of a 30 Kw solar power supply system at treatment and office building.	<ul style="list-style-type: none"> • Conducted baseline socio-economic household surveys with project beneficiaries • Developed an Environmental and Social Management and Monitoring (ESMMP) Plan; and • Prepared a comprehensive ESMP and ESIA reports. 	
26	Development of an Environmental Health and Safety Work Policy for Maone Fuel Service Station	The proposed Maone Fuel Service Station intends to construct and operate a filling station in the city of Blantyre. The facilities at the site will include a 24-hr service station with a tuck shop, banks, tyre fitment centre, kiosk and indoor playground. The scope of the EHS includes construction and operation activities to be implemented for the project will include site clearing, construction of driveway, forecourt, drainage, shop, tyre fitment centre, kiosk, installation of underground fuel tanks, loading and off-loading of fuel during operation phase. The Policy also covers measures in place to be used during times of emergencies and accidents.	<ul style="list-style-type: none"> • Developed an Environmental Health and Safety Workplace Policy 	Mr. Mohamed Hanif Osman
27	Training in Occupational Safety and Health, and Provision of Guidelines on the Development of an Occupational Safety and	Tilitonse Foundation in collaboration with Civil Society Agriculture Network (CISANET) and Welthungerhilfe (WHH) is implementing a project titled Strengthening Food and Nutrition Security Programming in Malawi. The project is funded by German Federal Ministry for Economic Cooperation and Development (BMZ) through	The overall objective of this assignment was to provide guidance in development of an OSH Policy/Guideline and train the three CSOs in Occupational Safety and Health	Tilitonse Foundation



No	Assignment Name	Brief Project Description	Detailed Services Provided	Client
	Health Policy for Tilitonse Foundation	<p>Welthungerhilfe. The main objective of this project is to promote the capacity of civil society organisations in Malawi to improve food security and strengthen resilience.</p> <p>Specifically, the project is expected to strengthen capacity of 10 civil society organizations (CSOs) and district-based network associations in evidence based FNS management, administration and programming. This support will in turn enable the targeted CSOs to plan and implement effective and participatory Food and Nutrition Security (FNS) programming approaches with their target groups or communities. In July 2022, Tilitonse Foundation in collaboration with Civil Society Agriculture Network (CISANET) and Welthungerhilfe (WHH) conducted a capacity assessment which identified critical gaps in management structure, financial and resource management systems, human resources and programme management. Based on the gaps identified, the assessment further recommended capacity development options that will enable the CSOs to effectively deliver on their mission. One of the gaps identified was that for CSOs do not have Occupational Safety and Health policy. It is against this background that Tilitonse Foundation engaged the services of Matex International to train the three organisations in Occupational Safety and Health and provide guidance on how to develop an OSH Policy.</p>		



3.0. Brief Profiles of Staff

No.	Name	Role	Qualifications	Years of Experience
1	Robert Matengula	CEO & Head of Sustainability	MSc. Environmental Management BSc. Education (Geography & Natural Resources Management) Dip. Social and Development Studies	>16
2	Hastings Jolotie Nyirenda	Physical Planner and Resettlement Specialist	MSc. Town and Regional Planning BSc. Architectural Studies	>16
3	Mayeso Undi	Structural Engineer	MSc. in Management and Implementation of Development BSc. in Civil Engineering from the University of Malawi	>16
4	Miriam Chipeta Kaluwa	Social Expert	MA in Development Studies, University of Sussex (Institute of Development Studies), UK BSc. in Agriculture (Rural/Community Development), University of Malawi	>23
5	Mwai Chingaye	Irrigation and Water Engineer	BSc. Irrigation Engineering	>8
6	Beracah Ntodwa	Social Development Analyst	BSc. in Applied Economics	>6
7	Miriam Moyo Matengula	Social Development Analyst/Operations & Administration Officer	BSc. Social Work Dip. Public Relations	>6
8	Paul Koloko	Environmental Analyst	BSc. Earth Science	>1



CEO & Head of Sustainability Over 16 years of professional experience



Robert Matengula

Robert is a Senior Consultant with over 16 years' experience working with Malawi Government, multilateral organizations, private companies and non-governmental organizations on environment, climate change and sustainable development management. Mr. Matengula has performed several environmental and social impact assessment consultancies in Malawi. His experience includes preparing climate change mitigation and adaptation strategies for projects funded by Malawi Government and developing partners. He has also been engaged to train rural farmers located in flood prone areas in climate smart agriculture. He has served as an environmental expert for several projects in Malawi and the SADC region, including service as independent environmental for Agricultural Productivity Programme for Southern Africa which comprises Malawi, Mozambique and Zambia. All work was performed to international and local standards.

Academic Qualifications

MSc. Environmental Management from University of Houston Clear-Lake

BSc. Education Humanities from University of Malawi

Dip. Social Development Studies from Volda University College, Volda, Norway

Dip. Renewable Energy for Developing Countries from United Nations Institute for Training and Research (UNITAR)

Key Areas of Expertise

- **Environmental and Social Impact Assessments** i.e., Team Lead
- **Climate change management** i.e., mitigation and adaptation
- **Environmental and social projects and programs development and management**
- **Risk reduction, assessment and management**
- **Project management and coordination; and**
- **Training and capacity building.**

Countries of Experience

Malawi, Malaysia, Mozambique, Norway, South Africa, Taiwan, USA

Languages

- **Chichewa:** Mother tongue
- **English:** Fluent
- **French:** Basic level



Physical Planner and Resettlement Specialist

Over 16 years of professional experience



Hastings Jolotie Nyirenda

Hastings is an accomplished consultant in land acquisition, GIS, urban planning and architectural services. He has worked in climate change projects, humanitarian response and recovery, development and construction projects. He has worked in projects financed by the World Bank, the African Development Bank, European Investment Bank, UNDP, European Delegation, and many more. He has worked on resettlement projects that include Dar Es Salaam Metropolitan Development Project (DMDP), Shire Valley Transformation Project, Malawi- Mozambique Interconnection Project, Red Cross Flood Recovery Project, Nacala Corridor Railway Line project and Millennium Challenge Account power line project.

Academic Qualifications

MSc. Town & Regional Planning from University of Pretoria – South Africa

BSc. Architectural Studies from University of Malawi

Countries of Experience

Kenya, Malawi, Mozambique, Tanzania

Languages

- **Chichewa:** Mother tongue
- **English:** Fluent
- **Tumbuka:** Fluent

Key Areas of Expertise

- **Resettlement Action Plans (RAPs);**
- **Data and information management**
- **CAD i.e., Revit, AutoCAD, ChiefArchitect**
- **Urban Master Planning**
- **QGIS**
- **Project management; and**
- **Environmental and Social Impact Assessment.**



Structural Engineer Over 16 years of professional experience



Mayeso Undi

Engineer Mayeso Undi is a professional Structural Engineer/Water Resources Expert with over 16 years of experience in infrastructure planning, designing and construction management. He has done Social Safety Nets Projects and Public Works Programs with the World Bank Group and Certificate in Contract Management with the NCIC. He has extensive work experience in planning, designing and supervising water resources, buildings, roads and irrigation works. He has extensively been involved in environmental assessments of rehabilitations, expansions and construction of water supply schemes.

He has worked as Head of Engineering Unit at the Local Development Fund Technical Support Team and was responsible for preparation of feasibility studies, designs for all rural public works projects (water, roads, buildings and irrigation) including project administration and management. Engineer Mayeso Undi had been Senior Water Supply and Sanitary Engineer for the design and construction supervision of Expansion of Nkhotakota Water Supply Scheme.

Academic Qualifications

MSc. in Management and Implementation of Development Projects from the University of Manchester, United Kingdom
BSc. in Civil Engineering from the University of Malawi
Certificate in Planning for Community Water Supply and Waste Management with FIDA,
Certificate in Infrastructure Quality Assurance with the NCIC,
Certificate in Contract Management with the NCIC.

Countries of Experience

Malawi

Languages

- **Chichewa:** Mother tongue
- **English:** Fluent

Key Areas of Expertise

- **Detailed infrastructure systems and structural design** public works projects.
- **Pre-feasibility and feasibility studies** for projects
- **Environmental and Social Impact Assessment**
- **Construction supervision** of structural and civil engineering projects
- **Project management**
- **CAD** i.e., AutoCAD, Revit, IRRICAD, CROPWAT; and
- **Technical proposal writing.**



Social Expert

Over 23 years of professional experience



Miriam Chipeta Kaluwa

Miriam Chipeta Kaluwa is a highly experienced social development and protection expert with over 23 years of progressive experience in humanitarian and development programming. She specializes in Gender-Based Violence (GBV), Child Protection, Prevention of Sexual Exploitation and Abuse (PSEA), Accountability to the Affected Population (AAP), and Social Safeguarding. Her technical expertise extends to policy development, program design and management, community engagement, mental health and psychosocial support (MHPSS), and social protection systems strengthening.

She possesses strong skills in advocacy, partnership building, donor relations, resource mobilization, and capacity building for governments, NGOs, and humanitarian workers. She has led multiple studies, strategic frameworks, and policy reforms for vulnerable groups in Malawi and internationally, including work with UNICEF, Save the Children, National AIDS Commission, and other agencies.

Academic Qualifications	Key Areas of Expertise
MA in Development Studies , University of Sussex (Institute of Development Studies), UK	<ul style="list-style-type: none">• Gender-Based Violence (GBV) prevention and response• Child Protection in Emergencies (CPiE) & Social Safeguarding• Prevention of Sexual Exploitation and Abuse (PSEA)• Accountability to the Affected Population (AAP) & Inclusion• Mental Health and Psychosocial Support (MHPSS)• Social Protection Systems Strengthening & Policy Development• Program Design, Management, and Donor Coordination• Community Engagement & Partnerships Building
BSc. in Agriculture (Rural/Community Development) , University of Malawi	
Countries of Experience	
Malawi, Barbados and Cameroon	
Languages	
<ul style="list-style-type: none">• English (Fluent & Proficient)• Chichewa (Fluent & Proficient)• Swahili (Beginner)• French (Beginner)	



Irrigation & Water Engineer

Over 7 years of professional experience



Mwai Chingaye

Mwai is an Engineer with over 7 years' experience and expertise in project management and safeguarding, assessment and construction supervision of irrigation, water supply and drainage projects, and detailed systems design using AutoCAD and CROPWAT.

As an Engineer at Matex, Mwai is responsible for the preparation of project proposals and contract management for the company, providing thorough analysis of designs, technologies, equipment, materials and activities for projects to ensure implementation is conducted in a sustainable manner to minimize adverse impacts to the environment. He has provided technical assistance in the preparation of environmental and social assessments for government and donor funded projects in different fields including irrigation, water supply, energy, processing, construction, mining among others

Academic Qualifications

BSc. Irrigation Engineering from LUANAR

Countries of Experience

Malawi

Languages

- **Chichewa:** Mother tongue
- **English:** Fluent

Key Areas of Expertise

- **Detailed irrigation systems and structural design** for irrigation and drainage projects
- **Pre-feasibility and feasibility studies** of irrigation and water supply projects
- **Environmental and Social Impact Assessment** i.e., technical assistance
- **Construction supervision** of irrigation and civil engineering projects
- **CAD** i.e., AutoCAD, Revit, IRRICAD, CROPWAT; and
- **Technical proposal writing.**



Social Development Analyst

Over 6 years of professional experience



Beracah Ntodwa

Beracah is an Economist with experience in development work including socio-economic research, project implementation, data analysis and, monitoring & evaluation for Malawi Government, private companies and non-governmental organizations. Beracah's expertise includes economic, social, research, impact assessments, project support, and data analysis. As a Social Development Analyst, Beracah's areas of focus include developing and implementing collaborative approaches to engage stakeholders in impact assessment process and employing best methodologies and analytical skills for socio-economic impact assessments during the ESIA process.

Academic Qualifications

BSc. Applied Economics from LUANAR

Countries of Experience

Malawi

Languages

- **Chichewa:** Mother tongue
- **English:** Fluent

Key Areas of Expertise

- **Research and Data Analysis**
- **Strategic Planning**
- **Social Impact Assessment**
- **Reporting and Data Visualization**
- **Technical Proficiency (MS Office, SPSS, STATA); and**
- **Stakeholder Engagement.**



Social Development Analyst/Administration Officer Over 6 years of professional experience



Mirriam Moyo Matengula

Mirriam is a Social Consultant with specialization in stakeholder engagement, gender, human rights, transitional justice, conflict prevention, and public relations. She has a particular interest in conducting social risk assessments to inform the clients and local communities, as a way of avoid conflicts during project preparation and implementation.

Academic Qualifications

BSc. Social Work from DMI St. John the Baptist University, Lilongwe Campus

Advanced Dip. Public Relations & Personnel Administration, ABMA from Malawi College of Accountancy

Countries of Experience

Malawi, USA

Languages

- **Chichewa:** Mother tongue
- **English:** Fluent

Key Areas of Expertise

- **Stakeholder engagement and consultations**
- **Social Impact Assessments**
- **Data analysis**
- **Community development and participatory monitoring and evaluation**
- **Conflict prevention, resolution and management; and**
- **Workplace administration and management.**



Environmental Analyst

Over 2 years of professional experience



Paul Koloko

Paul Koloko is an Environmental Analyst at Matex International Ltd with a BSc in Earth Science (Geology). He specializes in innovative technologies, bringing expertise in disaster risk assessment, GIS & Remote Sensing, and environmental sustainability to the Matex team.

His work includes proposal preparation, research, environmental impact assessments (EIAs), project support, and data analysis. Paul applies geospatial technologies such as QGIS, ArcGIS, and Pix4D for data visualization, field surveys, and environmental issues contributing to Matex's key initiatives.

Academic Qualifications

BSc. Earth Science from The Malawi University of Science and Technology (MUST)

Countries of Experience

Malawi

Languages

- **Chichewa:** Mother tongue
- **English:** Fluent
- **Turkish:** Basic level

Key Areas of Expertise

- **Stakeholder engagement and consultations**
- **Research and Data Analysis.**
- **QGIS**
- **Pre-feasibility and feasibility studies** of mining projects.
- **Environmental and Social Impact Assessment**
- **Construction supervision** using drone technology.
- **Technical proposal writing.**
- **Website & Social Media Management.**

